



MD PACKAGING INC.

**AUTOMATED PACKAGING AND
INSPECTION SOLUTIONS SINCE 1989**

REDUCED RISK AND IMPROVED PREDICTABILITY WITH BOTTOM LINE RESULTS



PROUD SUPPORTER
of various community programs.



MDPACKAGING.COM



MD Packaging has emerged as a leading distributor in Canada. Our unwavering commitment to excellence since 1989 has earned us a prominent position within the manufacturing sectors of food, beverage, pharmaceutical, consumer goods, industrial, and cannabis industries.

What sets us apart is our invaluable partnerships with renowned industry OEMs. When you choose MD Packaging, you gain access to cutting-edge technologies and a team of dedicated professionals who are passionate about your success. We work closely with our clients, offering access to personalized consultations and customized solutions that address your unique requirements.

From enhancing productivity to guaranteeing product integrity, we are committed to empowering your business to thrive in today’s competitive landscape.

PRODUCT INSPECTION



Our product inspection systems provide you with the performance and service you need to improve the quality and safety of your products, help you eliminate errors and ensure the integrity of your brand.



NEXTGUARD CONVEYOR X-RAY DETECTION SYSTEM

Transition easily and quickly from metal detection to x-ray inspection with the versatile Thermo Scientific™ NextGuard™ Conveyor X-ray Detection System. The NextGuard system offers enhanced capabilities to inspect packaged products for missing pieces or components, under and over-fills, and other quality problems with easily customizable vision software.



VERSA RX CHECKWEIGHER

Meet the high performance standards of the pharmaceutical industry with the Thermo Scientific™ Versa RxV Marking and Verification Pharmaceutical Checkweigher for track and trace applications and the Versa Rx Pharmaceutical Checkweigher.



SENTINEL MULTISCAN METAL DETECTOR

Overcome the limitations of fixed single or dual frequency metal detectors with the Thermo Scientific Sentinel Multiscan Metal Detector. By scanning up to five user-selectable frequencies running at a time, the Sentinel provides unmatched sensitivity and the highest probability of finding ferrous, non-ferrous and stainless steel metal contaminants in challenging applications such as dairy, meat, poultry, bread and other applications with high product effect.



BENCH SCALES

For mobility and convenience, bench scales offer ideal features that are adaptable to a wide range of applications. Rice Lake’s diverse bench scale selection offers a product for almost any conceivable capacity or requirement.

PRIMARY AUTOMATION



MD Packaging represents a number of industry leading vendors in the field of Primary Automation. Partners such as Matrix, Enercon, and Inline Filling Systems.



MORPHEUS – MVC-300 SERIES VFFS

The Matrix MVC-300 is a top-of-the-line servo-driven continuous box-motion bagger with a high-speed jaw system, delivering faster speeds and increased accuracy with films like polyethylene, which often require longer seal times. The film is pulled while the jaw is closed instead of waiting until the jaw opens to pull film. Therefore, gentle product handling occurs while the jaw is elevated and the product is deposited into the bag, minimizing the drop distance. The film is pulled down as the jaw lowers to seal the top of the bag.



MERCURY HS VFFS MACHINE

Due to its speed, dependability and low operating cost, the Matrix Mercury HS is the most popular Matrix VFFS Machine. It is fully compatible with nearly any filler and can seal laminate or poly film. The Mercury provides a self-centering film drive-down system, an automatic edge guide, and film tracking for precise film movement and trouble-free operation.



ELETE VFFS MACHINE

The Elete 13/15 and the Elete 18/20 are vertical form fill seal machines designed for various industries. This High-performance series is configurable for small and large bags. With automatic film tracking, a stainless steel frame, an optional printer, labeler, or printer options, and multiple valve application features and cycles of 100 bpm it delivers satisfaction.



ELETE PREMIER VFFS MACHINE

The Elete Premier is a hygienic stainless-steel machine, designed to thrive in high sanitation environments. It offers the same options as Elete with the added benefit of ground and polished welds, stud weld tie hooks and a weld drip pan- a worry-free sanitary design.



ELETE BAG IN BAG VFFS MACHINE

The Elete Premier is a hygienic stainless-steel machine, designed to thrive in high sanitation environments. It offers the same options as Elete with the added benefit of ground and polished welds, stud weld tie hooks and a weld drip pan- a worry-free sanitary design.



SUPER SEAL JR INDUCTION SEALER

Enercon’s Super Seal Jr offers an unprecedented combination of sealing capability, portability and production flexibility. This compact design is only 3’ x 8.25’ x 10.5”. It seals everything from the smallest closures to 120 mm wide-mouth containers.



SUPER SEAL MAX INDUCTION SEALER

Enercon Super Seal Max is for packagers with the most demanding applications. This innovative system offers production speeds never before possible with air-cooled systems. It reliably seals containers at production speeds in excess of 300 feet per minute.



LINK PACK LIDDER

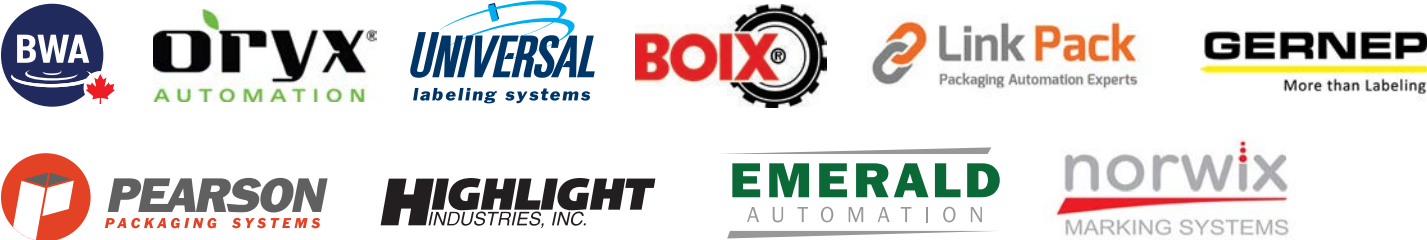
Link Pack’s Automatic Lidder accelerates the placing & sealing of plastic and metal lids on containers ranging from 1/2 pint to one gallon. This lidding system is ideal for cups, deli tubs, or buckets. Lids are automatically discharged from a gravity infeed and loosely placed on the containers, and a set of starwheels secure the alignment before the roller closers secure a tight seal.



OVERFLOW FILLING SYSTEMS

The most widely used filling machine in bottle filling operations because it handles a wide range of liquids at a modicum of cost. Ease of cleaning, ease of setup & expandable output makes this machine a favourite of growing companies.

SECONDARY AUTOMATION



Trust MD Packaging for all your case forming, sealing, packing, marking, labeling, returnable plastic crates (RPC), tray forming, bag inserter, bag uncuffer and bliss former requirements! We partner with the best in the industry!



BI18 BAG INSERTER
Pearson BI18 Bag Inserters open, insert and cuff plastic bags from roll stock into a wide variety of corrugated cases at speeds up to 18 cases per minute. Advanced design features guarantee smooth and precise bag placement and handling.



UC15 BAG UNCUFFER
Pearson’s UC15 Bag Uncuffer is a versatile machine designed to uncuff, fold and close poly bag liners in corrugated cases at rates of up to 15 cases per minute.



BF25 BLISS FORMER
Fully automatic and ruggedly built to withstand the rigors of high volume operations, the Pearson BF25 family of Bliss Formers produces high stacking strength, corrugated shipping and display containers with an H-Divider securely glued to a Bliss Body Wrap. Optional high-capacity Automatic Stack Transfer Systems, and a high-capacity Adhesive Feeder are available for high-speed operations.



CE25 CASE ERECTOR
The Pearson CE25 family of Case Erectors operates at speeds up to 25 cases per minute. All CE25 models feature an ergonomically friendly, powered, horizontal case magazine. With a vertical case presentation and compact footprint, the CE25 is ideal for limited floor space applications.



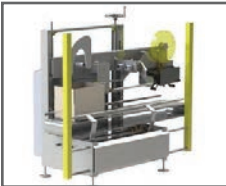
CS25 CASE SEALER
Pearson’s CS25 Case Sealers are compact and fully-guarded. The CS25 top seals a wide-range of case sizes with either pressure sensitive tape or hot melt adhesive at speeds of 25 to 42 cases per minute depending on case length.



ROBOTIC TOP LOADERS
All Pearson robotic top load solutions are fully-customizable to meet customer specifications. Using a variety of technologies including articulated arm and delta robots, along with custom end-of-arm tooling, Pearson Packaging Systems can accommodate a wide range of product styles, pack patterns, case styles, speeds, etc. in addition to meeting retail-ready requirements.



F16 CASE FORMER
Blue Water Automation’s F16 Case Former is compact in size and will automatically index in a case blank, confirm case integrity, positively fold all four bottom flaps and seal with pressure sensitive tape at rates up to 16 cases per minute. They are not only suitable for wet environments but more importantly, were designed from the ground up to meet strict specifications.



C16 CASE SEALER
Blue Water Automation’s C16 Case Sealer will automatically index in a loaded case, positively fold all four top flaps and seal with pressure sensitive tape at rates up to 16 cases per minute.



MAGNUM 2300 BFF
The Magnum 2300 BFF semi-automatic case erector allows one operator to quickly form & seal the bottom of up to 15 uniform empty cases per minute. This easy to use system provides an increase in productivity of 3-4 times over labor intensive hand taping, while significantly improving ergonomics to reduce repetitive motion strain.



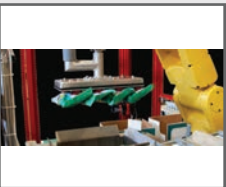
MAGNUM 2300 SD-U
The Highlight Magnum 2300 SD-U is a side belt drive case sealer. Side drives provide the best drive and support for cartons that are longer in length and shorter in height because the side drive belts hold the carton more securely while applying the tape. The 2300 will provide accurate, consistent tape application to uniform cases. The side belts drive and tape head can quickly be adjusted for different box sizes with the turn of a handle. Highlight’s 200 series tape head accepts any 2-inch case tape and provides optimum case sealing to the top and bottom of the case. Operates at up to 30 cases per minute.



RPC12-25GS
Cleverly designed to be the most economical and user-friendly crate erector available, it runs faster and uses less electricity than a kitchen toaster. Oryx Crate Erectors have handled over 130 million returnable plastic crates (RPCs) to date, minimising labour costs for both small and large operations globally. The GS model is capable of running a range of RPCs at up to 25 crates per minute. It is available with various options on the infeed and outfeed to marry seamlessly and integrate with existing packing lines.



Q-1500 TRAY FORMER
• The Q-1500 can be adapted easily and quickly to various tray design formats of corrugated board.
• The machine has 6 speeds and a production between 1.000 and 1.500 trays per hour.
• The Q-1500 is a compact machine and loading of blanks is done automatically from the feeding system.



BAG CASE PACKING SYSTEMS
Pearson’s bag and pouch case packing systems are efficient, flexible, and reliable. How it works: often the product is first settled with vibration before a vision-guided robot puts it in a case. The robot uses a vacuum-powered or mechanical gripper to gently pick-and-place bags from a conveyor to a box. Pearson design and build the end of arm tooling to minimize or even eliminate breakage during the movement of product.



CASE PACKERS FOR HORIZONTAL BAG PACK
Emerald’s Dash Series of case packers offers a “DP” (Drop Packer) model for bags in a flat or horizontal orientation. The Dash DPL (Drop Packer Large) is available for larger bags. They also have a vertical bag pack for bags that are cased in a vertical orientation. There are several models of the Dash Series to fit your specific needs and application.



UNO – THE ½” ALL-IN-ONE PRINT SOLUTION
The 1/2” .UNO packaging printer’s all-in-one print head and screen give you a simple, yet incredibly powerful way to print up to 1/2” of print with the minimum of effort. This packaging printer system, comprises of a 7” screen and attached print head allowing you to be up and running within minutes. Using inc.jet’s proven and highly reliable print solutions based on Hewlett-Packard technology, the .UNO packaging printer is the ideal product for serialization, barcodes and human-readable printing in all packaging applications.



TOTAL – PACKAGING INTEGRATION SOLUTIONS
TOTAL is the ideal industrial marking system for installations where flexibility and customization are required to meet the customer’s printing requirements. Individual components can be gathered together to make an industrial marking system that can print in any direction, integrate into external systems and give you the ability to print exactly what you need, every time. All .TOTAL industrial printing and marking systems are simple to integrate into existing packaging lines and equipment. With industry-standard mounting configurations and a design that takes up less room, it is a smarter alternative to bulky print systems.



CORE – COST EFFECTIVE CASE LOADING
The .CORE integrated heads are the essence of what makes inc.jet’s industrial printing solutions so successful—rugged design, solid connections to external elements and the finest print heads in the industry, all provided in a commercial off-the-shelf system. inc.jet’s Integrated heads are enclosed in an industrialized stainless steel casing for maximum protection. Up to four print heads can be accommodated within to give a 2” print swath. Seamlessly included in this rugged housing is a print controller and a bulk ink system.



SEMI AUTOMATIC LABELERS

R310 Round Product Labeling

Features:

- Roll-on labeling from ampules to gallons
- Quick and easy changeover
- Photoelectric label sensing
- Product size: .5” to 6” diameters
- Foot switch activation



AUTOMATIC LABELERS

R321 Round Product Labeling

Features:

- Extra heavy duty system framework
- SL1500 stepper driven label applicator
- Product metering
- Label wrapping station
- NEMA 12 control enclosure with multilevel menu
- Optional synchronous round product labeling



PRINT & APPLY LABELERS

Features:

- Industrial strength Print & Apply
- Easy-to-use operator touch screen
- Programmable Logic Controller (PLC)
- “Quick change” Tamp head

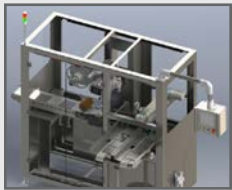


APPLICATORS

SL1500

Features:

- Stepper driven
- Modular approach
- Digitally controlled
- Multi-level menu system
- Photo-electric label sensing



AUTOMATIC POUCH LABELER

Raises the bar for accurate label application on the most common pouch sizes used by licensed cannabis producers. Its design efficiently runs up to 100 pouches with child-resistant zippers, press-to-close zippers, and bottom gussets.



SOLUTA PRESSURE-SENSITIVE LABELER

The Soluta delivers a highly cost-effective solution for labeling almost any shape or size of food, beverage, healthcare, or non-food container at up to 650/min speeds. Users will enjoy the possibilities of compatible labeling materials and graphic options such as shape, size, and finish.



CONTRACT PACKAGER SERIES

CP2000

Features:

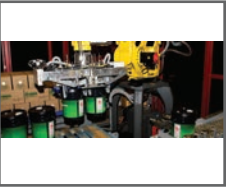
- Extra heavy-duty system framework
- Easy, rapid changeover
- Product metering

- Servo synchronous overhead hold down
- Servo synchronous product positioning
- Two SL2000 stepper-driven label applicators
- NEMA 12 control enclosure with multilevel menu



BAG PALLETIZING SYSTEMS

Pearson’s bag palletizing systems are built for repetitive heavy lifting at a fast rate. Typically a roller conveyor brings the bags to the palletizing cell, where a robot will lift a bag or group of bags onto the pallet. For dusty environments, the robot is fitted with a dust jacket. The end of arm tooling is usually a mechanical gripper with fingers or jaws to gently lift the bag and prevent ripping. Slip or tier sheets are used to steady the product on the pallet and are often applied by the same robot.



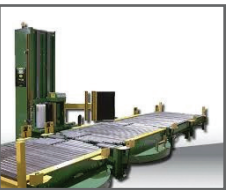
PAIL PALLETIZING SYSTEMS

Pearson’s pail and drum palletizing systems are designed with flexibility and productivity in mind. The palletizer can easily be adjusted to handle a variety of container sizes, styles and palletizing patterns. The robustness of design, working in harmony with the accuracy of the heavy-duty robot, means this palletizer can handle anything from a one-pint pail to a 45-gallon drum. Select the right application from the pre-programmed HMI and the system will do the rest.



FANTOM ROBOT – MOBILE STRETCH WRAPPING SYSTEMS

Highlight’s Phantom Robot gives you the freedom to wrap loads anywhere in your facility without sacrificing consistency and film savings. The semi-automatic controls make wrapping varying sized loads simple and easy. The Phantom Robot’s mobile design allows it to be brought to unstable loads, preventing the need to move them unwrapped. The self-propelled load tracking design means that products of any weight, length, or width can be wrapped simply.



SYNERGY 5 – TURNTABLE STRETCH WRAPPING SYSTEMS

Highlight Industry’s Synergy 5 Automatic is the industry standard for conveyorized turntable stretch wrap systems! Infinitely adjustable Dual Power Hydro-Stretch allows ultimate stretch film control with maximum load security. State-of-the-art touch screen controls provide reliable operation and versatility through ten user-programmable wrap “recipes”, as well as diagnostic indicators for troubleshooting.



PREDATOR SS

Predator SS is the affordable solution to stretch wrap your load without stretching your budget. The Predator SS is loaded with features, including top and bottom counters, photo eye and two (2) wrapping modes.

TURN KEY PACKAGING LINES/SYSTEMS INTEGRATION

END OF LINE AUTOMATION



MD Packaging are experts in end of line automation! Whether you are looking for case, bag, pail or bundle palletizing – we have a system for you! When it comes to stretch wrap systems – we have a solution for every budget.

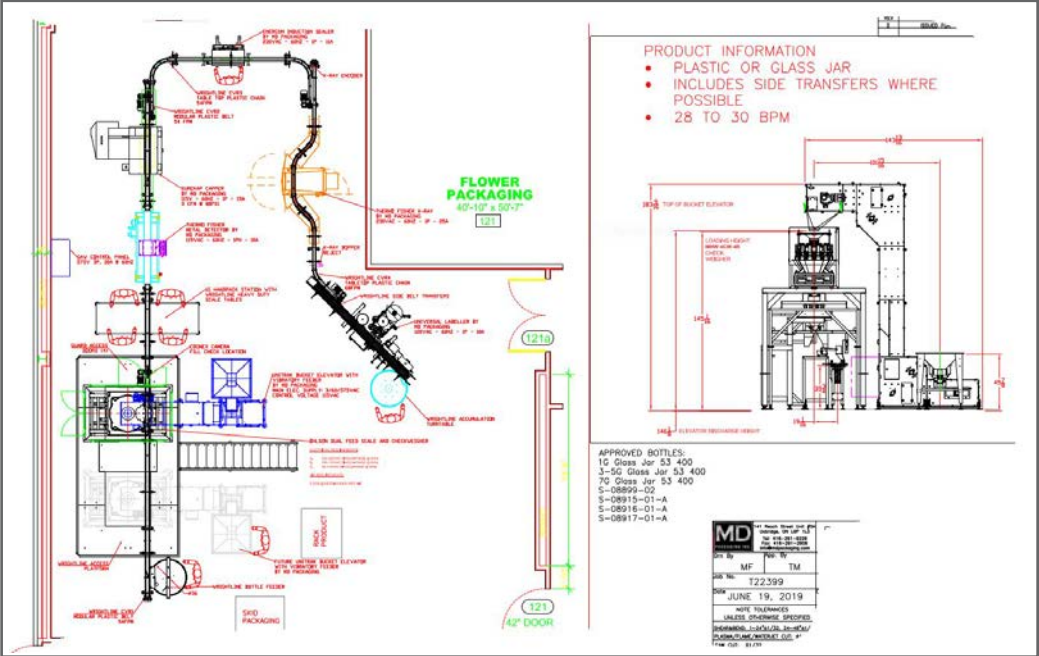


CASE PALLETIZING SYSTEMS

For almost two decades, Pearson has been building case palletizers for all case styles including RSC, HSC, Bliss boxes, and trays. Robotic case and carton palletizers are used to lift cases or cartons from production lines and place or stack them perfectly onto a pallet for shipping, moving or storing. A complete load can be stacked in a number of configurations, such as column-stacked, interlocked or pin-wheel configurations.

Pearson designs your system around a central robot, selecting the correct robot to best match your application. Combining Pearson’s end-of-arm tool technology and the inherent flexibility of a multi-axis robot allows complex palletizing routines to be completed without the need for multiple handling operations. Pearson will also integrate your case palletizer with other equipment such as conveyors, case erectors, case packers, and automatic guided vehicles to create a complete end-of-line solution.

Under the Tessera Group, Geroge A. Wright & Sons provide Industrial Contracting services and systems integration work to customers in Canada and the United States. Services include plant decommissioning and relocation, installation of silos and tanks, the manufacturing of mezzanines, integration of packaging machinery, design and fabrication of electrical and control panels, bakery equipment, mixers, baking ovens, vertical form-fill seal equipment, overwrap machines, metal detectors, cartoners, check- weighing, case packers, tray packers, shrink bundlers and conveyor systems to name a few.



CONSUMABLES



Our consumables division of MD Packaging consists of Shurtape, H.B. Fuller, Sigma Stretch Film, inc.jet and Detectamet. We partnered with leaders in the industry to help reduce downtime and increase plantwide OEE. Consumables were a natural fit for us – we already provide the equipment, service and parts - and now the consumables. We truly are your one-stop shop! Our goal is to improve your bottom line and production efficiency by providing you with a consumable product that has been constantly assessed/engineered and field tested with years of line experience.



Shurtape is a product we rely on and recommend to our customers to be used both in conjunction with case formers and sealers, but also as standalone/drop in upgrades to existing packaging lines. MD Packaging combines Shurtape HP Series packing tape with a Primeloc tape applicator for better carton seals and packaging line efficiency. Our inclusive service and support programs mean less downtime and a new proactive approach to increasing OEE.



H.B. Fuller offers leading edge, trouble-free adhesive technologies that form and seal cases, cartons and trays with better bonding using less adhesive. Their product line has the breadth and depth to handle nearly every conceivable substrate, machine and line speed. Protect your brand by using H.B. Fuller’s robust line of packaging adhesives that can improve the quality, safety and efficiency of your packaging operation and provides the best overall value.



Sigma Stretch Film is the industry leader for stretch film – hand, machine and specialty films. The Sigma Classic blown hand film is the best selling, general purpose hand film. This versatile film’s unparalleled puncture and tear resistance make it easy to use and reduces film breaks. Their machine film performs at its peak on high speed equipment. It is engineered to stretch up to 300% due to an easy unwind which makes it ideal for high speed, high pre-stretch equipment.



Norwix Marking Systems porous & non-porous inks are suitable for standard & challenging operations - they are designed around efficiency.



Detectamet designs, manufacturers and distributes detectable plastic tools and equipment. These can be identified by metal and X-ray inspection machines installed on food processing lines. If the tools or equipment fall into the food processing equipment, it is possible for the resulting pieces to be discovered and the contaminated food is then rejected before dispatch.

PRODUCT INSPECTION EMERGENCY SERVICES

DETECT, RECOVER & PROTECT YOUR BRAND

Through our emergency product inspection services, MD Packaging can thoroughly test every suspected product for contaminants or defects so that you can continue producing products that your consumers rely on!

With our flexible program, we can deliver the latest Thermo Fisher Scientific X-ray, Metal Detection and Checkweighing technologies to your facility along with our unparalleled technical expertise!

The program uses the most sensitive and advanced X-ray and metal detection equipment available, often able to detect contaminants below 1 mm. We have access to some of the best known, well established and respected equipment available. Your products can be inspected automatically or manually using a variety of equipment at your facility

We are also able to detect product damage, missing products and under filled or overfilled packages to ensure that you only supply quality-assured products for maximum product recovery.

Let us help you minimize scrap and rework when physical contaminants are suspected in packaged products on or after products enter the distribution channel.



DETECTABLE CONTAMINANTS INCLUDE:

- Metal
- Plastic
- Stone
- Product mass
- Glass
- Rubber
- Bone

UNRIVALED SERVICE DEPARTMENT!

In addition to being a distributor of product inspection and packaging automation solutions, we also offer many other services!

SERVICE

We have factory trained technical managers from coast to coast. In addition to servicing equipment we sell, we also service competitive equipment.



CALIBRATIONS

We have been performing dynamic scale calibrations since 1989.



PARTS

We have an extensive inventory of spare parts and can source ANY part you need!



PREVENTATIVE MAINTENANCE

We offer extensive PM programs with optional inclusion of wear/tear parts.



CERTIFICATIONS

We offer metal detection, x-ray and checkweigher certifications.



RENTALS

We stock various sizes of Thermo metal detectors, x-ray systems and checkweighers.



EMERGENCY RE-WORK PROGRAM

With our flexible program, we can deliver equipment to you with our technical expertise or depending on your product, you can ship to our facilities.

Rentals available on a daily, weekly or monthly basis.

We offer special pricing for preventative maintenance plans or programs.

In addition, we also offer plant-wide service plans. Contact our service department for more info at 416-291-9229 OR INFO@MDPACKAGING.COM

THE MD VALUE



SYSTEM START-UP

MD Packaging’s team can help develop a start-up program tailored to your individual needs. From simple start-ups to installations including rigging and mechanical completion, our team of experts and industry partners are here to help!



TRAINING

We provide custom training programs for your operations on everything from case erecting/sealing equipment to inspection equipment including x-ray, metal detection and checkweighing solutions. We can perform training on site or use our facilities in Uxbridge, Ontario, where we have numerous pieces of equipment, proper audio/video equipment and facilities for your staff.



PREVENTATIVE MAINTENANCE

We offer extensive PM programs with optional inclusion of wear/tear parts. Our program helps prevent machine malfunctions before they happen, saving you both time and money! We essentially act as your surrogate maintenance department.



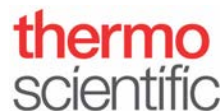
LONG HISTORY

We are a team of industry professionals in both sales and service that have been around since 1989! We are one of the largest and most integrated packaging automation organizations in the country. Our extraordinary team is what continues to earn us both new and repeat business.



MD PACKAGING INC.

AGYLE INTELLIGENCE	AUTOMATED REPORTING
BLUEWATER AUTOMATION	TRAY FORMING & SEALING
BOIX	TRAY FORMING & SEALING
EMERALD AUTOMATION	CASE PACKING
ENERCON	INDUCTION SEALING
GEORGE A. WRIGHT	CONVEYING & INTEGRATION SOLUTIONS
GERNEP	ROTARY LABELING SOLUTIONS
HIGHLIGHT INDUSTRIES	CASE FORMING & SEALING AND STRETCH WRAPPING
INLINE FILLING SYSTEMS	LIQUID FILLING EQUIPMENT
JLS AUTOMATION	PRIMARY ROBOTIC PACKAGING
LINK PACK	CUSTOM-DESIGNED LINEAR LABELING SOLUTIONS
MATRIX PACKAGING	VERTICAL BAGGING SYSTEMS
NORWIX	MAKING AND LABELING SOLUTIONS
ORYX AUTOMATION	CRATE HANDLING EQUIPMENT
PEARSON PACKAGING	CASE FORMING/SEALING
RICE LAKE	WEIGHING TECHNOLOGIES
SUREKAP	CAPPING EQUIPMENT
THERMO FISCHER SCIENTIFIC	CHECKWEIGHERS, METAL DETECTORS & X-RAY INSPECTION SYSTEMS
UNIVERSAL LABELING SYSTEMS	PRESSURE SENSITIVE LABELERS, PRINT & APPLY SYSTEMS



CODE OF ETHICS

MD Packaging Inc. is committed to conduct business in a professional, honest and ethical manner and to comply with the law wherever it conducts business. MD Packaging expects all employees to conduct their business in a professional, honest and ethical manner, and to comply with all applicable laws wherever they do business, including laws relating to employment, human rights, the environment and health and safety.

SUPPLIER CODE OF ETHICS

Providing or receiving gifts, personal favors or any other benefit which might influence or raise doubts as to the impartiality of the recipient and damage the reputation of MD Packaging for fair dealing are prohibited.

GOVERNING PRINCIPLES

1. CONFLICTS OF INTEREST

MD Packaging Inc. will conduct business in a professional, honest, ethical and transparent manner. Employees should not engage in any activity that gives rise to an actual or perceived conflict of interest.

(a) Entertainment, gifts and payments

Providing or receiving gifts of money, goods or services solely for personal use, personal discounts, loans, gifts of non-business related travel or accommodations, personal favors or any other benefit which might influence or raise doubts as to the impartiality of the recipient and damage the reputation of MD Packaging for fair dealing are prohibited.

Certain business courtesies such as payment of a reasonable amount for a lunch or dinner in connection with a business meeting normally would not be a gift within the context of this policy. Advertising novelties would not be inappropriate to give or receive, provided the item is of insignificant value and is widely distributed to others under essentially the same business relationship with the customer.

(b) Illegal payments

Offering or accepting bribes, kickbacks or improper payments of any kind is strictly prohibited, without exception, in all circumstances.

2. CONFIDENTIALITY OF INFORMATION

Employees are responsible for complying with their obligations to protect Confidential Information of MD or of any customer, supplier or business partner of MD and ensuring that such Information is only used for the purpose for which it was provided.

Each employee shall adhere to and comply with the non-disclosure agreement it enters into with MD and its customer. In the absence of a non-disclosure agreement, each employee must treat all information of, or supplied by MD, its customers, other suppliers and/or other business partners which is confidential, proprietary and/or not otherwise publicly available as Confidential Information including trade secrets, know-how, designs, inventions, techniques, processes, prototypes, undisclosed patents pending, finances, personnel records, business plans and proposals, capacity and production information, marketing or sales forecasts and strategies, client and customer lists, pricing lists or strategies, construction plans, supplier data, business leads, and all information relating to MD customer projects.

3. COMPLIANCE WITH LAWS, RULES AND REGULATIONS

Each employee shall comply with all laws and regulations that apply to it wherever it conducts business and shall not, at any time, take any action which it or its employees knows, or reasonably should know, may be in violation of any applicable law or regulation, including but not limited to the following:

(a) Health and safety

Employees are required to follow safe work practices and comply with all applicable health and safety guidelines relating to their work, including governmental requirements, operations and facility-specific safety requirements, and contractual requirements. Suppliers are fully responsible for the health, safety, and continuous training of their employees. Suppliers shall minimize risks and implement best practice preventive measures against accidents and occupational illness, including an occupational health and safety management system.

(b) Environmental responsibility

Employees are expected to conduct their business in an environmentally responsible manner and not to engage in any activity that violates environmental laws or regulations wherever they conduct business.

(c) Employment practices

MD Packaging Inc. will adhere to local employment laws, including those related to maximum hours of daily labor, rates of pay, minimum age, privacy and other fair working conditions. MD promotes equal opportunities and the equal treatment of all employees.

(d) Reporting of Violations and Other Illegal or Unethical Behaviour

Any employee or Customer's employee who becomes aware of any illegal or unethical behavior and/or any violation of this Code of Ethics has a responsibility to report his or her knowledge promptly to the CEO of MD Packaging Inc, by writing jaime@mdpackaging.com. Except as required by law, persons reporting concerns may request that they remain anonymous. MD Packaging makes every attempt to protect the confidentiality of information provided, unless maintaining confidentiality would create a significant health, safety or legal risk.

OUR LEADERSHIP TEAM



JAIME ALBOIM

Jaime's experience includes a background in the flexible packaging industry having sold consumable/equipment programs in Canada for many years. He then spent five years at Mettler-Toledo Canada working and managing their

Industrial/Retail Food segments. Jaime is widely considered an expert in the weighing/inspection equipment and remains a close adviser to a number of Canadian Food + Beverage companies. Before acquiring MD Packaging in 2017, Jaime was an independent agent in the packaging industry representing a number of primary and secondary vendors. Jaime lives in Uxbridge where he oversees the operations of MD Packaging and its affiliate companies.



BRETT PAYNE

Brett joined Belcor Industries in 1997, an upstart packaging machine manufacturer. As what would become one of the foremost end-of-line solution providers, his experience as the OEM Manager would provide him with exposure to industry leading OEM's, large integrated projects and fortune 500 companies throughout Canada, the US and Latin America. Under the new Promach ownership group in 2002,

he was promoted to Industrial Group Sales Manager for the combined BEL/Wexar product line. Making a significant move in 2006, he accepted a Consulting position with Pearson Packaging Systems. His primary mandate was to develop a strategic sales & marketing plan to utilize the Robotics & Integrated Systems Group to leverage sales of Pearson's core products. Before acquiring MD Packaging in 2017, Brett formed SpeedPak and was an independent agent in the packaging industry. Brett lives in Chilliwack and manages business and technology development for MD Packaging and its affiliate companies.

Every project, large or small receives the full attention of our dedicated team of packaging professionals to help you, our customer, meet your objectives! As a truly full service organization, MD Packaging provides national representation for many of North America's and Europe's premier manufacturers of inspection and automation solutions through our regional offices in Toronto, Montreal, Calgary and Vancouver. A comprehensive in-house parts and service department with factory trained technicians support our customers during and after installation to ensure they achieve the best machine efficiencies in the market today and tomorrow.

Operating from our 7400 sq. ft. head office facility located in Uxbridge, Ontario, MD Packaging provides comprehensive sales, parts and service support to our national base of customers. Our modern showroom is available to demonstrate many of the most popular and technologically advanced packaging equipment solutions available in the market today. We provide a level of sales and service support unequalled in the market today. Call today to arrange an appointment to discuss your automation/inspection requirements.

MEMBERSHIP & ASSOCIATIONS



LEASING WITH MD PACKAGING



MD Packaging, in association with Equilease, is pleased to offer our customers the option of leasing their purchase. Leasing is a perfect option for anyone making a big ticket purchase. Equilease's simple and efficient leasing process will help you quickly acquire the equipment and software your business needs in order to operate. Whether you have an established business or a start-up, new equipment can help increase revenue. Leasing your equipment can improve cash flow resulting in a much more effective operation.

141 Reach Street, Unit #5A, Uxbridge, ON L9P 1L3
Tel: 416-291-9229 • Fax: 416-291-2906 • info@mdpackaging.com

WWW.MDPACKAGING.COM