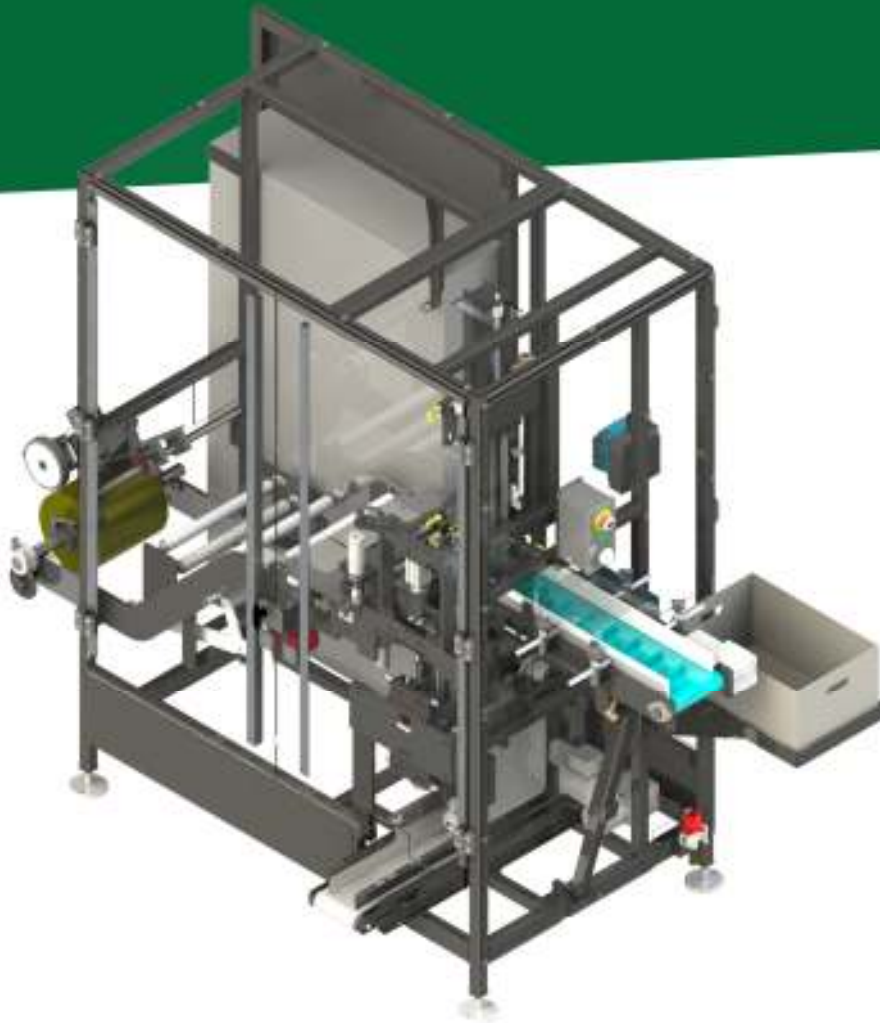


AF-20 Potato Wrapper

EMERALD
AUTOMATION



The **AF-20 Potato Wrapper** uses our patented belt design to wrap potatoes in aluminum foil. This one-of-a-kind machine uses rolls of foil instead of individual sheets. Product is brought in and dropped softly into catch gates. A photo eye triggers the plunger to gently drive the product through the pre-cut foil and into the wrapping belts. The wrapped product is deposited onto the discharge conveyor.

The engineering team at **Emerald Automation** solved a complex problem by designing a machine with the ability to wrap fresh produce using our unique belt design. The **AF-20** was designed and manufactured by a team of engineers and technicians with over 100 years of combined machinery experience. **Emerald Automation** integrates a diverse yet practical approach to machinery design to provide rugged construction complemented with state-of-the-art technologies.

FEATURES

- ◆ Uses rolls of foil vs sheets
- ◆ 20+ wrapped products/min
- ◆ Capable of wrapping products with variable dimensions
- ◆ Ethernet communications
- ◆ Easy to operate
- ◆ “No Tools” change over feature
- ◆ Frame mounted emergency start/stop station
- ◆ Easy maintenance
- ◆ Open frame design for ease of inspection, maintenance and cleaning

CONSTRUCTION

- ◆ Heavy-duty frame & manufactured parts
- ◆ Powder coating finish
- ◆ Allen Bradley controls standard
- ◆ Stainless Steel Option
- ◆ UL & ULC 508 Listed Enclosure
- ◆ Quick-disconnect field devices
- ◆ Easy-access Lexan guarding
- ◆ Designed to meet current machine safety standards

Emerald Automation

9228 W Clearwater Drive
Kennewick, WA 99336

Phone:
509.783.1369

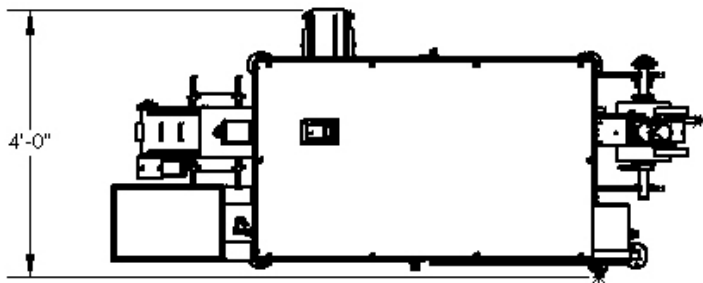
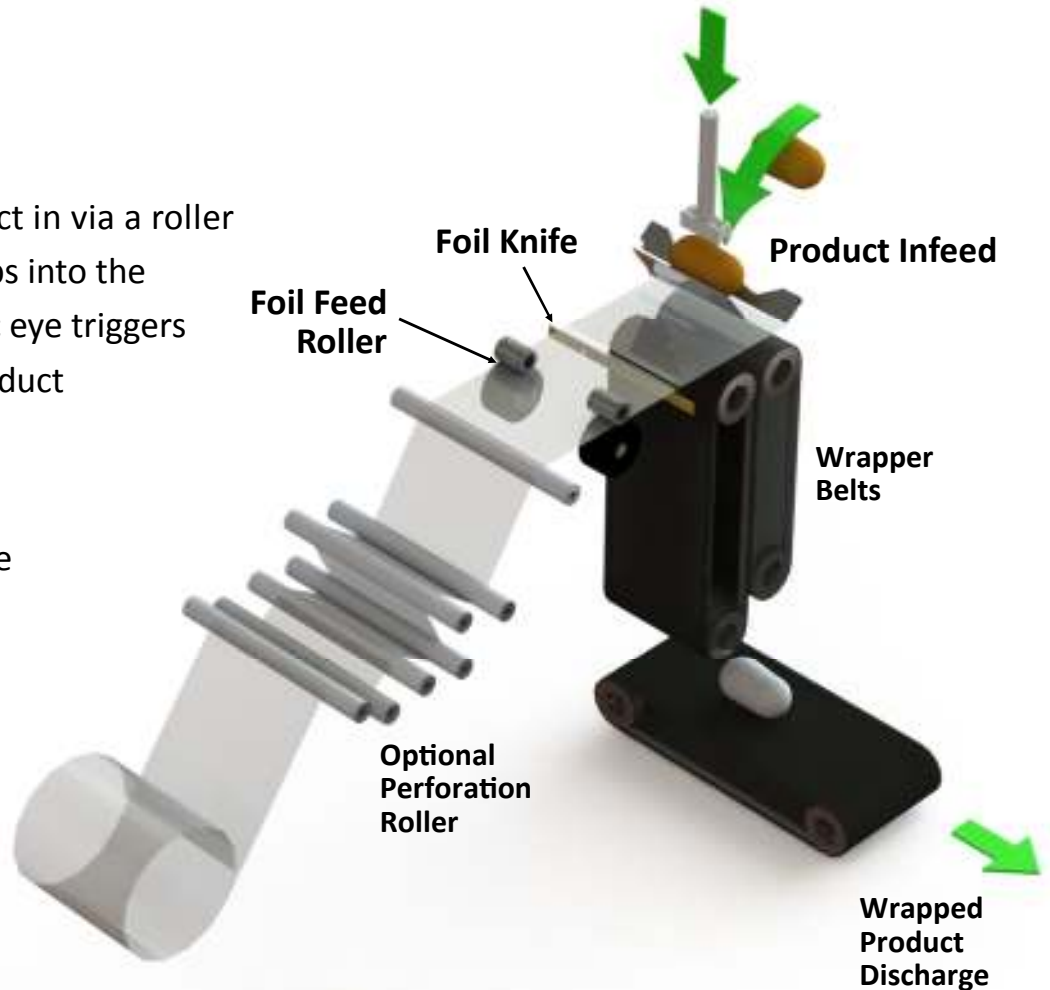
Email:
sales@emeraldautomation.com

AF-20 Potato Wrapper

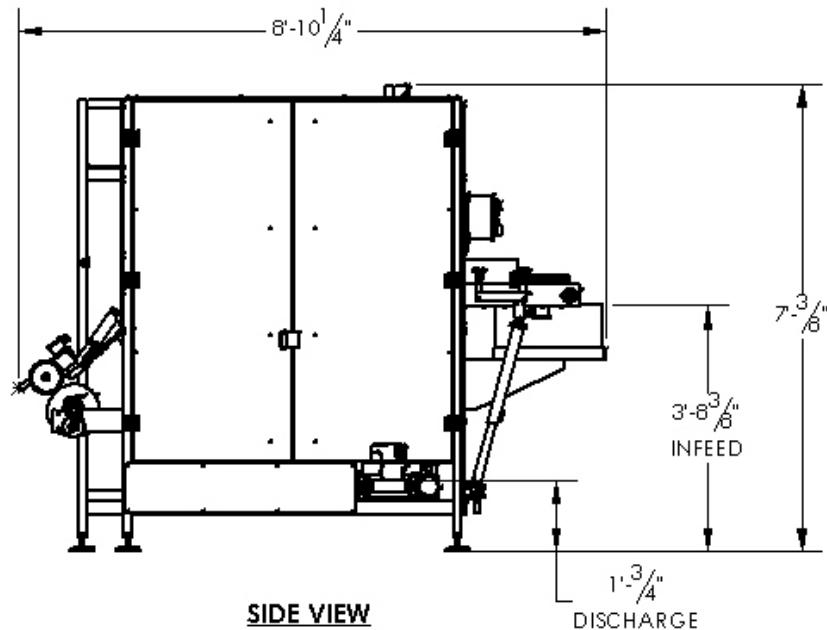
EMERALD
AUTOMATION

The **AF-20** brings the product in via a roller in-feed. As the product drops into the catch gates, a photo electric eye triggers the plunger to drive the product through the pre-cut foil and into the wrapping belts.

The wrapper belts rotate the product to complete the wrapping process and deposit the wrapped product onto the discharge conveyor.



TOP VIEW



SIDE VIEW