



Matrix is an industry leading manufacturer of rugged, cost competitive, and easy-to-operate vertical form fill & seal (VFFS) equipment for all types of flexible packaging and operates as a master distributor for INVpack offering stickpack and sachet machines, and Pacraft offering pre-made pouch packaging machines. Experienced in many flexible packaging applications, Matrix has the ability and knowledge to tailor highly efficient and sensible packaging systems and is committed to optimizing solutions for customers on a global scale. Matrix is a product brand of ProMach, a global leader in packaging line solutions. As part of the ProMach Flexibles & Trays business line, Matrix helps our packaging customers protect and grow the reputation and trust of their consumers. ProMach is performance, and the proof is in every package. Learn more about Matrix at www.MatrixPM.com and more about ProMach at www.ProMachBuilt.com.



Turnkey Packaging Solutions for the Canadian Manufacturing Industry

MD Packaging is part of the Tessera Group, and is a 100% Canadian company with regional offices in Toronto, Montreal, Calgary, Vancouver and Summerside PEI. As a truly full-service organization, MD Packaging provides Canadian representation for many of North America and Europe's premier OEMs like Matrix Packaging Machinery.

As experts in the packaging field, they work very closely with customers to provide turnkey solutions and high-level integration services during and after installation. With an in-house parts, service department, and factory-trained technicians, they help Canadians get the most out of their packaging lines.

Matrix

2395 Dakota Dr. • Grafton, WI 53024

P: 262-268-8300

TOLL FREE: 888-Matrix1

E: Matrix@ProMachBuilt.com

MatrixPM.com

MD Packaging

141 Reach St Unit 5A, Uxbridge, ON • L9P 1L3, Canada

P: +1 416-291-9229

E: info@mdpackaging.com

www.mdpackaging.com





MVC-300

VERTICAL FORM/FILL/SEAL

F&T

FLEXIBLES
& TRAYS

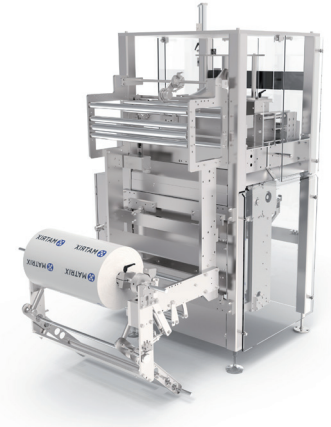


MVC-300

VERTICAL FORM/FILL/SEAL

Servo-Driven Continuous Box-Motion Offers Exceptional Performance with the HMI you need.

The Matrix MVC-300 is a servo-driven continuous box-motion bagger, providing cutting-edge technology with a high-speed jaw system that allows for maximum dwell time on sealing. This delivers faster speeds and accuracy, with films like polyethylene, that normally require longer seal times. The film is pulled while the jaw is closed as opposed to waiting until the jaw opens to pull film, gentle product handling occurs as the jaw is in the elevated position when product is dropped into the bag, minimizing drop distance. The jaw then lowers, pulling the film down with the movement to seal the top of the bag.



The Matrix MVC-300 offers the state-of-the-art Beckhoff HMI control systems delivering a highly intuitive, and easy to use packaging machine, with wireless remote diagnostics.

FEATURES & BENEFITS

- Made in the USA
- Open channel stainless steel 3 NEMA 4X electrical enclosure, 304 frame grounded & polished "sanitary" and adjustable mounting feet or optional casters
- Servo-driven continuous box-motion jaw for maximum speed and jaw dwell time
- Recipe based AutoPro™ with Beckhoff Servo Adjustment System for size change
- High performance vacuum film pull-belts (improves performance with difficult films)
- Pivoting electrical cabinet
- 12" multi-touch HMI with 800 x 600 screen resolution
- Electronic film registration mark, pneumatic film roll brake, automatic ultrasonic film tracking
- Comprehensive self-diagnostic tools
- Cloud based wireless remote diagnostics

OPTIONS

- Mechanical or heated hole punch
- Thermal transfer printer with integrated signal encoder
- Independent seal platens for poly film
- Digital gas flush
- Side gusset (top and bottom)
- Load shelf (intermittent)
- UL 508A (built and certified in-house)
- Power unwind
- Washdown
- Flat bottom bags

BAG STYLES



PILLOW BAG



GUSSET BAG



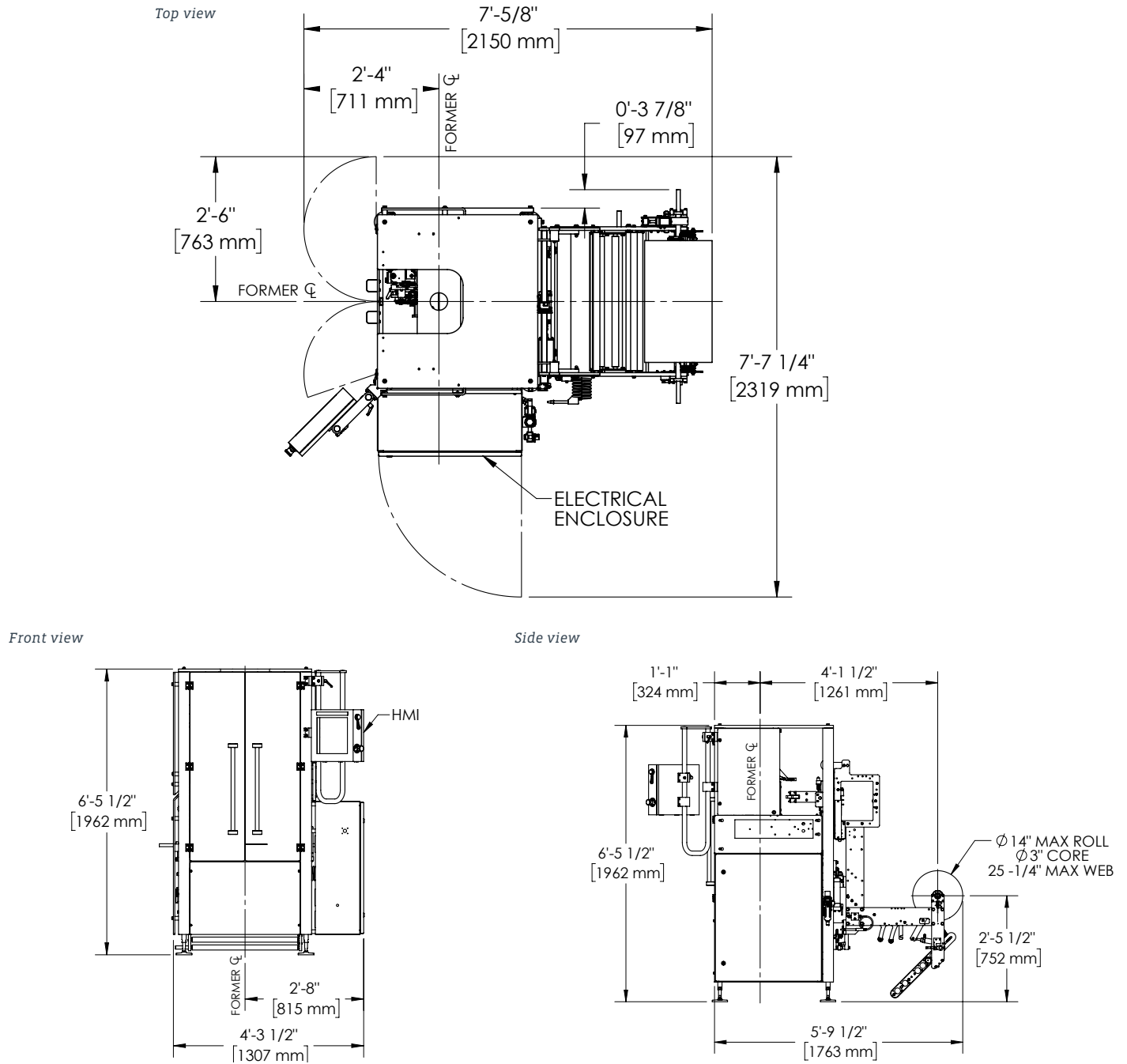
FLAT BOTTOM BAG



MODIFIED DOY POUCH FILM WITH STAND-UP POUCH SYSTEM OPTION, (available with or without zipper)



CONFIGURATION



TYPICAL PRODUCT SPECIFICATIONS

Cycle Speed	Up to 200 BPM (depending on application)	
Electrical	230V (+/- 5%), 30 AMP, 3PH, 50/60 Hz	
Air Pressure	10 CFM @ 80 PSIG (+/-20%) (demand varies by application)	
Bag Size	Width	Length
Minimum	2.75" (70 mm)	2.75" (70 mm)
Maximum	12" (305 mm)	16" (406 mm)

Film Roll (Std)	14" diameter
Film	Laminate or poly film sealing capability
Filler	Compatible with all types