



Matrix is an industry leading manufacturer of rugged, cost competitive, and easy-to-operate vertical form fill & seal (VFFS) equipment for all types of flexible packaging and operates as a master distributor for INVpack offering stickpack and sachet machines, and Pacraft offering pre-made pouch packaging machines. Experienced in many flexible packaging applications, Matrix has the ability and knowledge to tailor highly efficient and sensible packaging systems and is committed to optimizing solutions for customers on a global scale. Matrix is a product brand of ProMach, a global leader in packaging line solutions. As part of the ProMach Flexibles & Trays business line, Matrix helps our packaging customers protect and grow the reputation and trust of their consumers. ProMach is performance, and the proof is in every package. Learn more about Matrix at www.MatrixPM.com and more about ProMach at www.ProMachBuilt.com.



Turnkey Packaging Solutions for the Canadian Manufacturing Industry

MD Packaging is part of the Tessera Group, and is a 100% Canadian company with regional offices in Toronto, Montreal, Calgary, Vancouver and Summerside PEI. As a truly full-service organization, MD Packaging provides Canadian representation for many of North America and Europe's premier OEMs like Matrix Packaging Machinery.

As experts in the packaging field, they work very closely with customers to provide turnkey solutions and high-level integration services during and after installation. With an in-house parts, service department, and factory-trained technicians, they help Canadians get the most out of their packaging lines.

Matrix

2395 Dakota Dr. • Grafton, WI 53024

P: 262-268-8300

TOLL FREE: 888-Matrix1

E: Matrix@ProMachBuilt.com

MatrixPM.com

MD Packaging

141 Reach St Unit 5A, Uxbridge, ON • L9P 1L3, Canada

P: +1 416-291-9229

E: info@mdpackaging.com

www.mdpackaging.com





ELETE

VERTICAL FORM/FILL/SEAL

F&T

FLEXIBLES
& TRAYS



ELETE

VERTICAL FORM/FILL/SEAL

Available in Two Sizes, the Matrix Elete is the Ideal Solution for Customers Seeking Reliability

The Matrix Elete™ VFFS machine is a high-performance, completely configurable solution for customers that need consistent reliability. Its rugged design provides outstandingly repeatability and it can deliver tremendous value with automatic film tracking, its stainless-steel frame and numerous customizable options. Not only can the Elete produce several different bag sizes, it can also create multiple package styles, such as pillow, gusset, and flat bottom.

The Elete can produce bags at up to 100 bpm. With several machine versions available, you can choose the one that makes the most sense for your packaging needs.



High performance Elete machine effectively produces multiple bag types and sizes on a single machine.

FEATURES & BENEFITS

- Made in the USA
- Stainless steel frame and NEMA 4X electrical enclosure
- Registered film sensor, print registration roller and automatic film tracking
- Allen Bradley MicroLogix PLC with 10" color touch screen
- Beckhoff servo motors for film pull and jaw motion
- Larger bag high performance at a reasonable cost
- Quick change T-slot jaw faces
- Laminate or poly film sealing capability
- Full compatibility with all types of fillers

OPTIONS

- Rotated jaw (for 3-sided seal)
- Washdown or sanitary construction
- Gusset and flat bottom bag attachments
- Edge or center back seal (adjustable back seal)
- Mechanical or heated hole punch
- Button or flex-style coffee valve applicators
- Digital Gas flush
- Ultra sonic edge guide sensor
- Vacuum belts
- Power Unwind
- Independent quick-change seal platens for poly film
- AB Compact Logix controller with AB servo motors

BAG STYLES



PILLOW BAG



GUSSET BAG



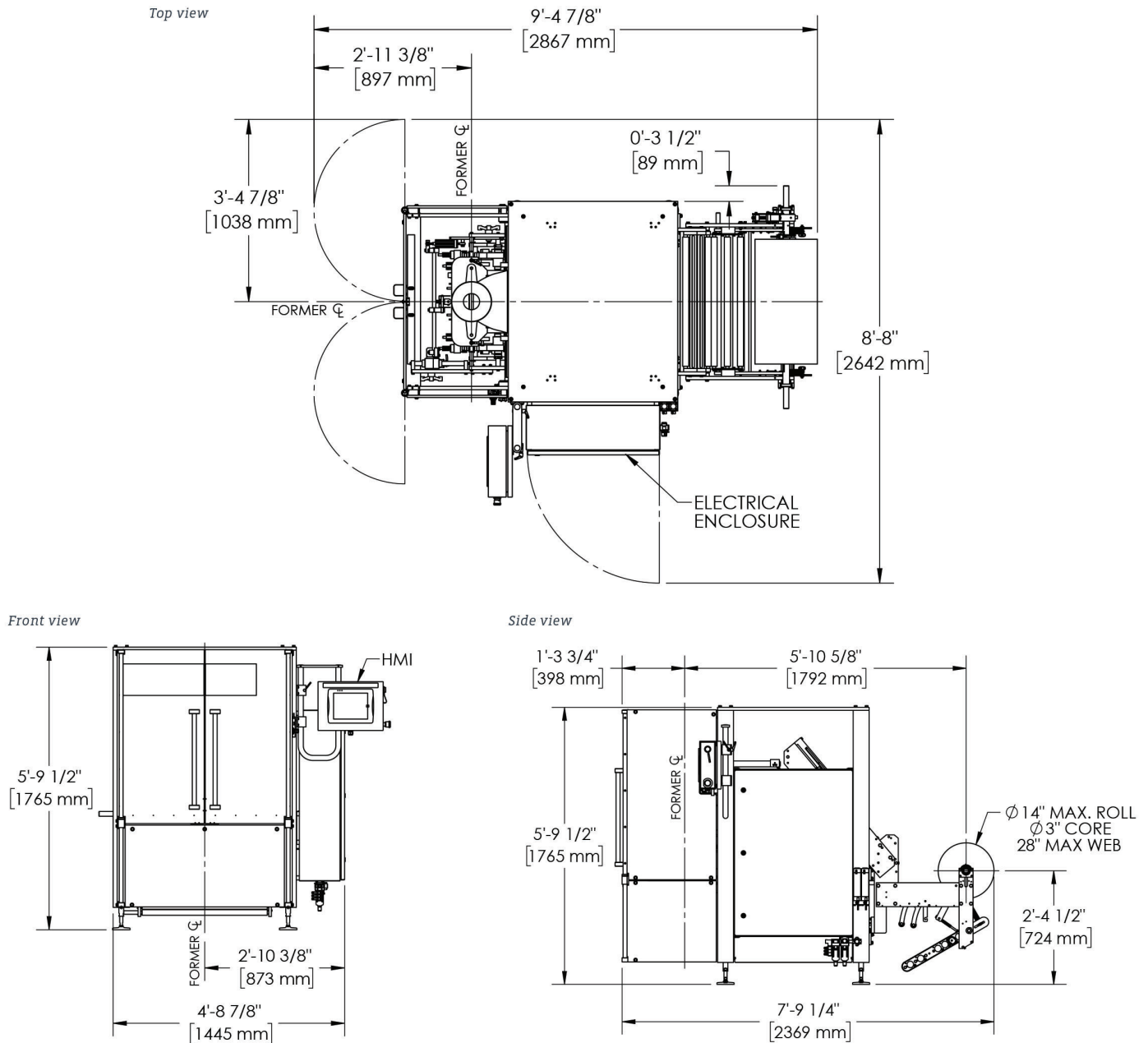
FLAT BOTTOM BAG



MODIFIED DOYPOUCH FILM WITH STAND-UP POUCH SYSTEM OPTION, (available with or without zipper)



CONFIGURATION



TYPICAL PRODUCT SPECIFICATIONS

Cycle Speed	Up to 100 BPM (depending on application)		
Electrical	230V (+/- 5%) 30 AMP Single phase, 50/60 Hz		
Air Pressure	3-12 CFM @ 80 PSIG (demand varies by application)		
Bag Sizes	Width	Length	
Minimum	3" (76 mm)	3" (76 mm)*	
Maximum	13" (330 mm) D13 18" (457 mm) D18	15" (381 mm) D13 23" (584 mm)* D18	
Film Roll (Std)	N/A		
Filler	Compatible with all types		
Film	Laminate or poly film sealing capability		

*Longer bags possible with multi-pull feature or extended vertical seal.