



Matrix is an industry leading manufacturer of rugged, cost competitive, and easy-to-operate vertical form fill & seal (VFFS) equipment for all types of flexible packaging and operates as a master distributor for INVpack offering stickpack and sachet machines, and Pacraft offering pre-made pouch packaging machines. Experienced in many flexible packaging applications, Matrix has the ability and knowledge to tailor highly efficient and sensible packaging systems and is committed to optimizing solutions for customers on a global scale. Matrix is a product brand of ProMach, a global leader in packaging line solutions. As part of the ProMach Flexibles & Trays business line, Matrix helps our packaging customers protect and grow the reputation and trust of their consumers. ProMach is performance, and the proof is in every package. Learn more about Matrix at www.MatrixPM.com and more about ProMach at www.ProMachBuilt.com.



Turnkey Packaging Solutions for the Canadian Manufacturing Industry

MD Packaging is part of the Tessera Group, and is a 100% Canadian company with regional offices in Toronto, Montreal, Calgary, Vancouver and Summerside PEI. As a truly full-service organization, MD Packaging provides Canadian representation for many of North America and Europe's premier OEMs like Matrix Packaging Machinery.

As experts in the packaging field, they work very closely with customers to provide turnkey solutions and high-level integration services during and after installation. With an in-house parts, service department, and factory-trained technicians, they help Canadians get the most out of their packaging lines.

Matrix

2395 Dakota Dr. • Grafton, WI 53024

P: 262-268-8300

TOLL FREE: 888-Matrix1

E: Matrix@ProMachBuilt.com

MatrixPM.com

MD Packaging

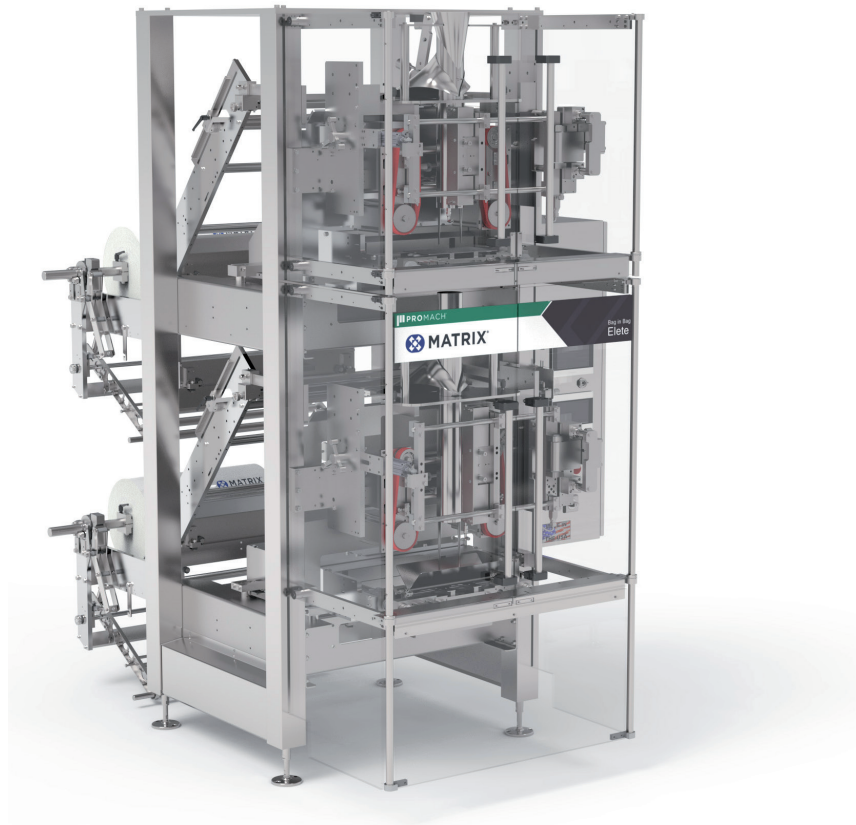
141 Reach St Unit 5A, Uxbridge, ON • L9P 1L3, Canada

P: +1 416-291-9229

E: info@mdpackaging.com

www.mdpackaging.com





ELETE

BAG-IN-BAG

F&T

FLEXIBLES
& TRAYS

ELETE

BAG-IN-BAG

The Elete Bag-in-Bag Machine provides an Innovative Way to Fill Single Serve and Multi-Serve Pillow Bags in an Overwrap or Master Bag

Pillow bags are created from roll-stock in the upper section of the Bag-in-Bag machine. As each bag is made, product is dispensed, and bag is sealed before continuing its journey by dropping down in to an overwrap or master bag.

Here a pillow bag, optional flat bottom or gusseted bag is created on the lower section of the machine, when the pre-determined number of bags are dropped, the final package is sealed, producing the final bag.



Unique and versatile, the Bag-in-Bag machine effectively produces entire package in one machine.

FEATURES & BENEFITS

- Made in the USA
- Automatic film tracking, registered film sensors and unwind film spindle
- Stainless steel frame, NEMA 4X electrical enclosure, adjustable mounting feet
- Allen Bradley MicroLogix PLC with 10.5" color touch screen
- Beckhoff servo motors for the film advance and jaw actuator for upper and lower sections
- Fully compatible with all types of fillers
- Quick change T-slot jaws

OPTIONS

- Mechanical or heated hole punch
- Flat bottom and gusset/tucker attachment
- Printer, labeler, valve applicators
- Digital gas flush
- Load shelf (for heavier bags)
- UL electrical system (built and certified in-house)
- Vacuum belts
- Product stager
- Power unwind (bottom film carriage)
- AB Compact logix controller with AB servo motors
- Ultra sonic edge guide servo
- Independent quick change seal platens for poly film
- Washdown

UPPER SECTION BAG STYLE



PILLOW BAG

LOWER SECTION BAG STYLES



PILLOW BAG



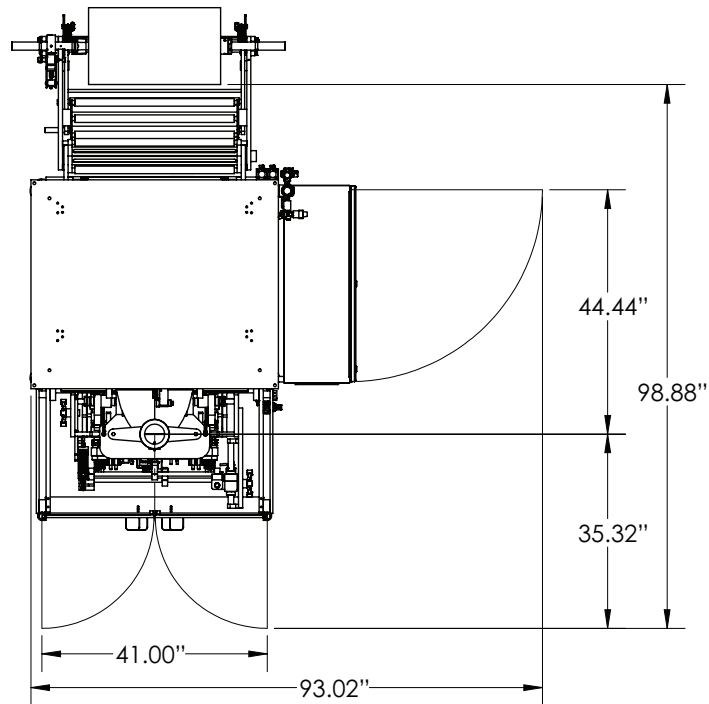
GUSSET BAG



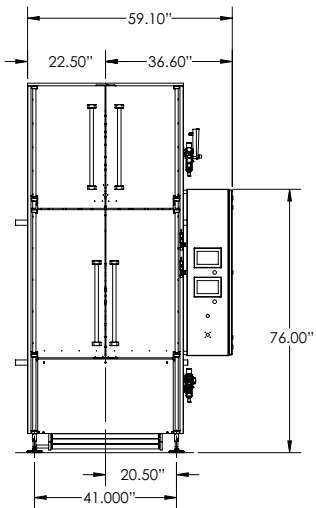
FLAT BOTTOM BAG

CONFIGURATION

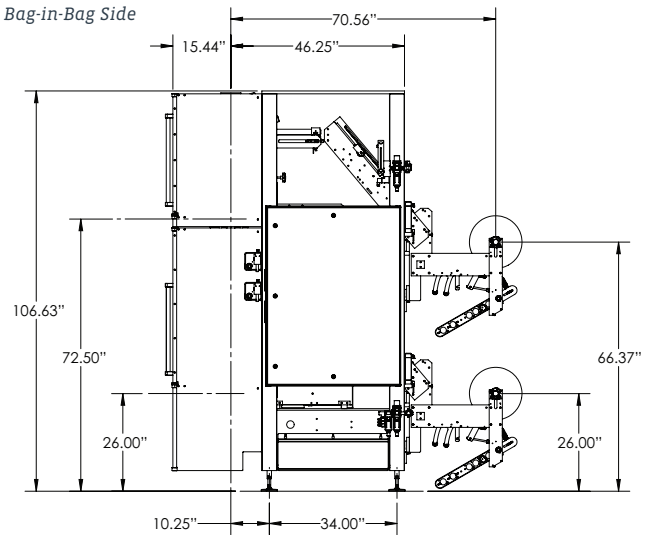
Bag-in-Bag Top



Bag-in-Bag Front



Bag-in-Bag Side



TYPICAL PRODUCT SPECIFICATIONS

Cycle Speed	Up to 100 BPM (depending on application)
Electrical	208-240 VAC 30 AMP
Air Pressure	6-20 CFM @ 80 PSI (demand varies by application)
Film	Laminate, poly or paper film sealing capability
Filler	Compatible with all types

Bag Sizes	Upper Primary Bag	Lower Overwrap Bag
Minimum Width	3" (76 mm)	3" (76 mm)
Maximum Width	9" (229 mm)	15" (381 mm)
Minimum Length	3" (76 mm)	3" (76 mm)
Maximum Length	12" (305 mm)	15" (381 mm)
Film Roll (Std)	N/A	N/A

We reserve the right to introduce technical modifications without notice.