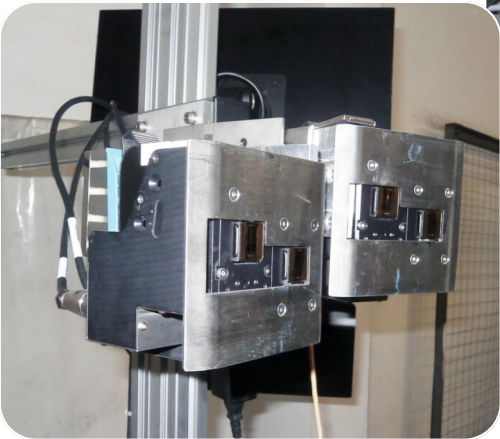
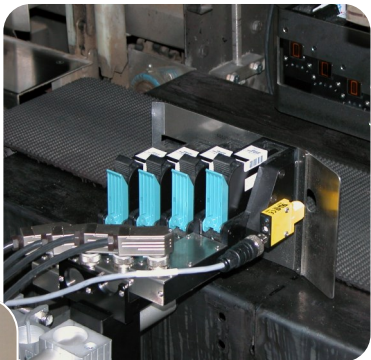




.TOTAL COMPONENT CATALOG



6" User Interface (5018188G)

The User Interface is a Windows CE industrial touch screen computer, providing printer configuration, control, and command from a single point for up to sixteen Print Controllers or four lines. IPS Director is preinstalled. Operationally, a wide variety of operating conditions can be monitored in real-time, including job types, counts and even ink consumption. A USB port allows for connection to hand held barcode scanners or for thumb drives to upload print jobs.



15" User Interface (5019311G)

The User Interface (UI) is a Windows XP Embedded, 15" touch screen computer which provides print job design, printer configuration, control and monitoring for up to sixteen Print Controllers or four lines. The 15" UI has both IPS Director and IPS Producer pre-installed. It is supplied with a keyboard and mouse and a keyboard mounting bracket suitable for installation on the Fixed Stand. A USB port allows for connection to hand held barcode scanners or for thumb drives to upload print jobs.



4 Pen V6 Print Controller (5020171G)

The Print Controller is a rugged, stainless steel, industrial box containing an Norwix V6 print control card. It has an external power supply, Ethernet outlet and 10 additional application-specific interface connectors supporting Print Stalls, Encoder, Sensor, Daisy Chain, Stack Light and General Purpose I/O functions.



V7 Print Controller (5020184G)

One of the most flexible arrangement of jet.engine technology is where the print engine electronics reside in a stainless steel box (controller) and 1 print stalls can be driven in any configuration, as desired.



1/2" Standard Print Stall (5020161G)

This Pen Stall has the shortest vertical height available. The solid industrial design means it can be used in almost any environment and has a easily adjustable 90 degree rotational point for precise positioning. It accepts easily replaceable Managed Print Cartridges.



1/2" Assembled Print Stall With Cover (5020191G)

This single pen 1/2" print head is designed with a protective gasket and integrated splash cover to help prevent dust and other contaminants from entering the pen stall. The print head comes with an attached bidirectional ski and pen cable to attach it to a Print Controller. This NOT IP55 rated.



1/2" Assembled Low Profile Print Stall With Cover (5018825G)

This single pen 1/2" low profile print head is designed for print applications where the print head must be positioned to print close to the bottom of a package. The print head nozzles are only 1/2" from the bottom of the print head. This print head is designed with a protective gasket and an integrated splash cover to help prevent dust and other contaminants from entering the pen stall. The print head comes with an attached bidirectional ski and pen cable to attach it to a Print Controller.



Ski Kit for 1/2" Standard Print Stall (5020161G)

- 2 Pen Standard Print Head Ski Kit Bidirectional (6009320G)
- 3 Pen Standard Print Head Ski Kit Left to Right (6009321G)
- 3 Pen Standard Print Head Ski Kit Right to Left (6009322G)
- 4 Pen Standard Print Head Ski Kit, Left to Right (6009323G)
- 4 Pen Standard Print Head Ski Kit Right to Left (6009324G)



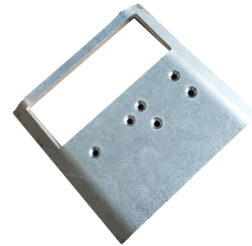
Ski Kit for 1/2" Standard Print Stall (5020191G)

- 2 Pen Covered Standard Print Head Ski Kit Bidirectional (5018974G)



Ski Kit for 1/2" Assembled Low Profile Print Stall With Cover (5018825G)

- 2 Pen Covered Low Profile Print Head Ski Kit Bidirectional (5019393G)



Print Stall Interface Cable – Straight, 2m (4970411G-0200)

Used to connect pens to Print Controllers. The standard cable length is 2 meters. Cables are available in custom lengths by special order only.



Print Stall Interface Cable – Right Angle, 2m (4970412G-0200-A)

The standard cable length is 2 meters. Cables are available in custom lengths by special order only. The configuration of the right angle connector is adjustable in the field to any 45 degree angle (8 unique locations), so the exit angle of the cable can be adjusted to match the installation as required.



Daisy Chain Interface Cable, 3m (4970905G-0300)

A daisy chain cable is required when using more than one print controller on a line. The daisy chain cable transmits the encoder and sensor signals to the additional print controller. One daisy chain cable is needed for each additional print controller. The standard Cable length is 3 meters. Cables are available in custom lengths by special order only.



I/O Cable Assembly (4971170G)

This cable assembly provides connection to the 12 signals on the I/O connector. The standard cable length is 5 meters. Cables are available in custom lengths by special order only.



Sensor Interface Cable (4971005G)

The Photocell Interface cable connects a customer-provided sensor with a standard 4-pin M-12 connector to the print controller. The standard cable length is 4 meters, but the cable can be shortened in the field for specific requirements. Cables are available in custom lengths by special order only.



Sensor Kit (5019667G)

The Sensor Photocell Kit includes everything needed to attach a product detection sensor directly to any print head. One sensor is needed per line. The mounting plate is used to extend the sensor over the ski assembly. The Sensor Kit comes with a connecting cable.



Laser Sensor Kit (5020159G)

The Laser Sensor Photocell Kit includes everything needed to attach a product detection sensor directly to the .UNO or .UNO Plus. The laser sensor work in the same fashion as the standard kit, however with greater accuracy. The Sensor Kit comes with a connecting cable.



Encoder Kit With Knurled Wheel (5019671G)

The Encoder Kit includes all components needed to install and mount a 300 PPI encoder on a printing conveyor. Norwix's standard encoder has a resolution of 1800 pulses per revolution and comes with a 6" circumference knurled wheel to generate 300 ppi print pulses. The standard cable length is 4 meters. The Encoder Kit is supplied with mounting brackets.



Encoder Kit With Urethane Wheel (5020082G)

Ethernet Switch Kit (5018683)

Norwix offers a 5-Port Ethernet Switch kit. This is required for all systems with multiple print controllers or a connection to a plant network.



Stack Light (5019315G)

The optional Stack Light contains a stack light system that provides a 3-color LED-illuminated status indication in all directions. Mounting hardware is shipped attached to the assembly.



.UNO Mounting Kit (5019839G)

The .UNO Mounting kit is used to mount the .UNO print stall securely in a fixed position in any printing application, such as to the side of the conveyor. Many different configurations are possible with this mounting kit. It is fully adjustable and also allows for the mounting of screens and any bulk systems.



Single Pen Regulator Kit (5019711G)

This is a single regulator designed specifically for single pen installations. It has markings on the side to indicate the appropriate heights to mount the regulator when the .UNO Mounting Kit is used. It is suitable for non-solvent inks only.



2" Bulk Ink Regulator (5019587G)

The 2" bulk ink regulator can connect up to four pen stalls to a bulk ink container. It is used for applications only when printing down. It includes an integral ink filter and is supplied with a Priming Kit and a Bulk Extension tube.



800mL Bulk Ink Holder with Empty Detect Kit (5020192G)

The 800mL Bulk Ink Holder with Empty Detect Kit is a gravity-feed bulk ink system with attached mounting hardware designed for Managed Inks. The unit detects when the bulk ink is empty and has an LED (Green/Red) that displays the ink status. The Empty Detect switch connects directly to the I/O Connector using the included Cable Assembly. This bulk ink holder is used with the Single pen Regulator Kit.



Solvent Ink Bulk Supply (5020160G)

The Solvent Ink Bulk Supply is an active device that connects to the cartridge and measures ink pressure directly at the cartridge. Ink is fed from the bulk supply to the cartridge when required. It is designed to work with the latest solvent based inks.



Solvent Ink Bulk Supply Manifold Kit

2 head (5020155G)

3 Head (5020156G)

4 Head (5020157G)

When multiple print heads utilize the same solvent bulk ink supply, a manifold must be built. These kits contain all of the necessary tools and parts to create the appropriate ink distribution system. The kits come with an easy start guide to aid in design and construction.



Solvent Ink QD Cartridge Interconnect Tube (5020141G)

Although the Solvent Bulk Ink Supply and Manifold kits include Interconnect tubes, spares may be required in the lifetime of the system. One is required for each print head and are reusable



Solvent Ink QD Interconnect Spare Cable (4971140G)

Although this is supplied in the Solvent Ink Bulk Supply, there may be occasions when a spare is required. This connects between the Solvent Bulk holder and the QD solvent Cartridge



Tech Wipes—Pack of 150 (1952217)

High absorbency, heavy duty wipes are ideal for cartridge maintenance. Can be used wet or dry, made from a hydro-entangled blend of Polyester & Cellulose, and will not leave any lint residue behind.



Nozzle Priming Kit (5019065G)

This kit is used to remove air from a nozzle ink chamber on the cartridge. It is supplied with a plastic syringe and cartridge clip



Norwix, Inc.
31 Clinton Avenue
Norwich, CT 06360
USA

Tel: +1-860-823-3090
Email: sales@norwix.com