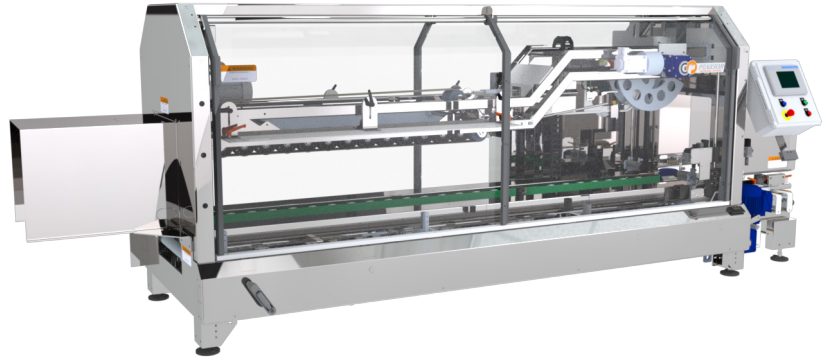



## CS50-UG Case Sealer

Pearson's CS50-UG case sealer runs boxes as small as 5in x 3.5in x 3.75in and reliably seals up to 50 cases per minute. The machine offers the optional capability of running tall, unstable and odd-size cases. A convenient bypass option eliminates the need for additional conveying when pre-sealed boxes or HSCs are introduced into the line. Spring loaded synchronous compensating side belts and squaring wheels ensure cases remain square throughout the closing and sealing process. A servo-controlled trailing flap kicker increases speed, component longevity and reduces expensive air consumption.



<b>Speed</b>	Up to 50 cases/min	
<b>Min. Case Size Base Machine</b>	5" (L) x 3.5" (W) x 3.75" (H)	Extended case size range available
<b>Max. Case Size Base Machine</b>	16" (L) x 12" (W) x 14" (H)	
<b>Sealing</b>	Hot Melt Glue	
<b>Operation</b>	Servo	
<b>Changeover</b>	Manual, supported by HMI graphical guided instructions and changeover map, scales, pointers, and quick release handles, 4 min (estimate for trained technician)	
<b>Construction</b>	Mild Steel   Stainless Steel   Low Pressure Washdown	
<b>Machine Size Range (ft)</b>	14.5 (L) x 5 (W) x 5 (H)	
<b>Controls</b>	Allen-Bradley CompactLogix PLC PackML Compliant PanelView Color HMI	
<b>Air Requirements</b>	80 PSI	
<b>Power Requirements</b>	460 VAC	
<b>Disconnect Sizes</b>	60 Amps	
<b>Air Consumption</b>	0.314 SCF/Cycle	
<b>Full Load Amp Base Machine</b>	31.3 Amps	
<b>Case Support</b>	 RSC      CSSC      Ultra-small Cases	

### Standard Features

- HMI with User Centric Design
- Safety Redundancy with CAT 3
- Reliable Non-Contact Interlocks
- High-Visibility Machine Status
- Easily Accessible Grace Port
- Auxillary Operator Station
- Remote Access Support Capability

### Popular Upgrade Options

- Oversized and Undersized Case Support
- Glue on Demand System
- High-Capacity Adhesive Feeder
- Air-Conditioner
- Low-Temp Environment
- Plant Level Ethernet Connection
- Portability

## Resources

To view videos or download floorplans of the base machine, please click on the links



CS50-UG Case Erector  
Floor Plan



Standard  
Component  
List



Ewon Remote  
Access Router  
Information

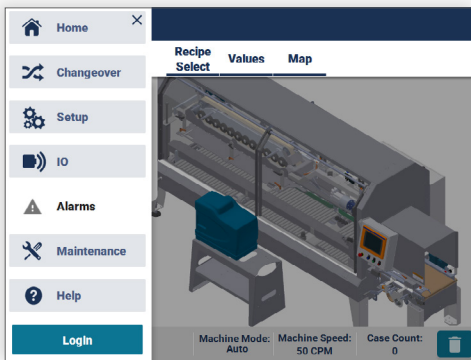


## User Centric Design

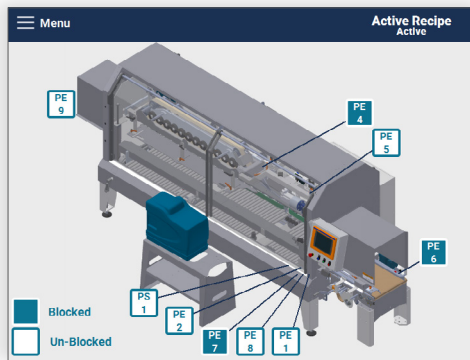
**Minimize training time | Increase changeover and fault-recovery speed | Promote improved machine maintenance**

Machine operators that perform their tasks independently free up maintenance time and keep lines running smoother. Yet frequent turnover, language barriers, and skill gaps in these positions pose significant challenges to operations teams asked to meet production goals while reducing costs in the process. Pearson's User Centric Design is there to help.

With an uncluttered design, intuitive navigation, interactive guides, live sensor maps and advanced maintenance features, the HMI has morphed into a personal assistant.



Main Navigation



Sensor Map Screen



Changeover Instructions



**Not just a  
great product  
but a reliable  
partner**

- Find reliable, thought-out solutions based on 60 years of experience | 30 years of robotic integration
- Expect a rugged machine design optimized for high-volume 24/7 operations
- Optimally support a high-turnover labor force with an intuitive Human Machine Interface (HMI)
- Benefit from a uniform user interface for your erecting, packing, sealing, and palletizing equipment
- Experience premier industry lead-times for faster delivery and shorter down-payment cycles
- Depend on our project managers to provide ongoing visibility to meet delivery timelines and budgets
- Count on comprehensive sales, aftermarket, and service support
- Rely on extensively trained and FANUC Certified technicians to service your equipment
- Always lean on us for 24/7 live service support