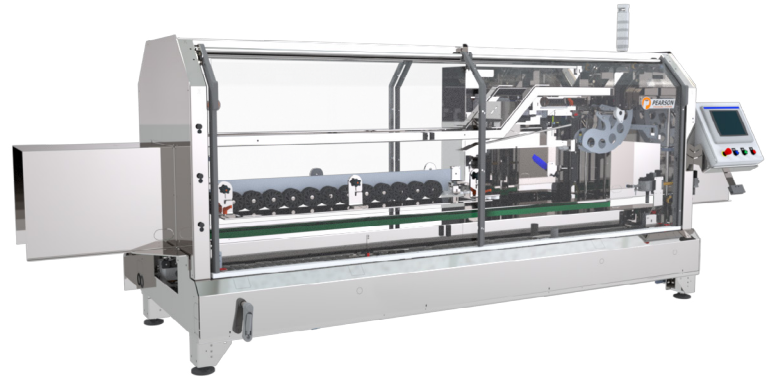



CS40 Case Sealer

Pearson's CS40 Case Sealer top seals a wide range of case sizes at speeds of 40 to 67 cases per minute depending on case length. A convenient bypass option eliminates the need for additional conveying when pre-sealed boxes or HSCs are introduced into the line. Spring loaded synchronous compensating side belts and squaring wheels ensure cases remain square throughout the closing and sealing process. A servo-controlled trailing flap kicker increases speed, component longevity and reduces expensive air consumption by replacing air cylinders.



Speed	40-67 cases/min depending on case length	
Min. Case Size Base Machine	8" (L) x 5" (W) x 4.75" (H)	Extended case size range available
Max. Case Size Base Machine	24" (L) x 16" (W) x 18.5" (H)	
Sealing	Hot Melt Glue Tape	
Operation	Servo	
Changeover	Manual, supported by HMI graphical guided instructions and changeover map, scales, pointers, and quick release handles, 3 min (estimate for trained technician)	
Construction	Mild Steel Stainless Steel Low Pressure Washdown	
Machine Size Range (ft)	11-14.5 (L) x 5 (W) x 5 (H)	
Controls	Allen-Bradley CompactLogix PLC PackML Compliant PanelView Color HMI	
Air Requirements	80 PSI	
Power Requirements	460 VAC	
Disconnect Sizes	30 Amps	
Air Consumption	Glue: 0.100 SCF/Cycle Tape: 0.046 SCF/Cycle	
Full Load Amp Base Machine	Glue: 25.2 Amps Tape: 15.1 Amps	
Case Support	 RSC CSSC FOL	

Standard Features

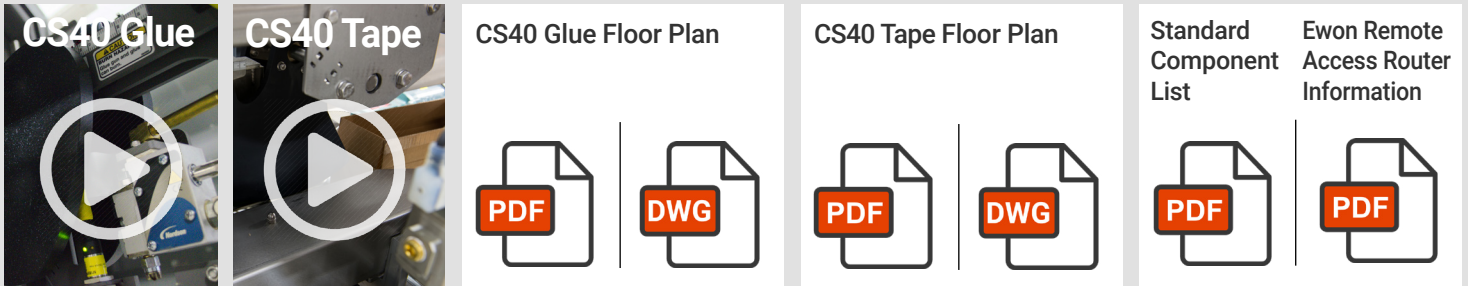
- HMI with User Centric Design
- Safety Redundancy with CAT 3
- Reliable Non-Contact Interlocks
- High-Visibility Machine Status
- Easily Accessible Grace Port
- Auxillary Operator Station
- Remote Access Support Capability

Popular Upgrade Options

- Oversized and Undersized Case Support
- Glue on Demand System
- High-Capacity Adhesive Feeder
- Bottom Tape
- Addtl. Tape Head
- Air-Conditioner
- Low-Temp Environment
- Plant Level Ethernet Connection
- Portability

Resources

To view videos or download floorplans of the base machine, please click on the links

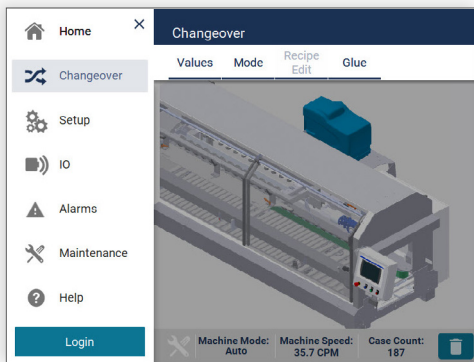


User Centric Design

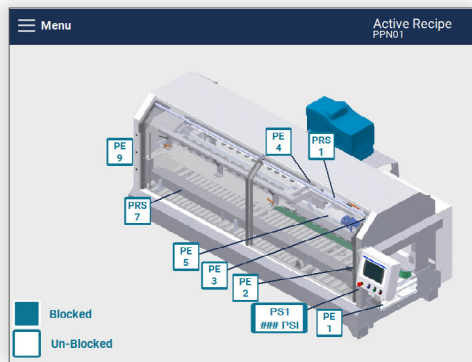
Minimize training time | Increase changeover and fault-recovery speed | Promote improved machine maintenance

Machine operators that perform their tasks independently free up maintenance time and keep lines running smoother. Yet frequent turnover, language barriers, and skill gaps in these positions pose significant challenges to operations teams asked to meet production goals while reducing costs in the process. Pearson's User Centric Design is there to help.

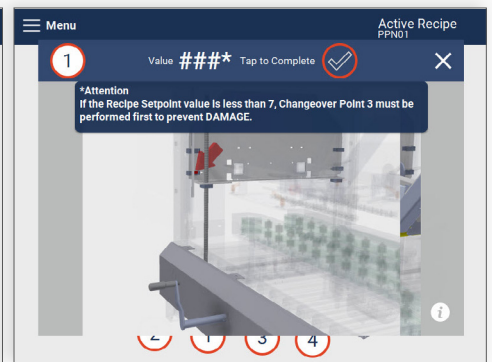
With an uncluttered design, intuitive navigation, interactive guides, live sensor maps and advanced maintenance features, the HMI has morphed into a personal assistant.



Main Navigation



Sensor Map Screen



Changeover Instructions



**Not just a
great product
but a reliable
partner**

- Find reliable, thought-out solutions based on 60 years of experience | 30 years of robotic integration
- Expect a rugged machine design optimized for high-volume 24/7 operations
- Optimally support a high-turnover labor force with an intuitive Human Machine Interface (HMI)
- Benefit from a uniform user interface for your erecting, packing, sealing, and palletizing equipment
- Experience premier industry lead-times for faster delivery and shorter down-payment cycles
- Depend on our project managers to provide ongoing visibility to meet delivery timelines and budgets
- Count on comprehensive sales, aftermarket, and service support
- Rely on extensively trained and FANUC Certified technicians to service your equipment
- Always lean on us for 24/7 live service support