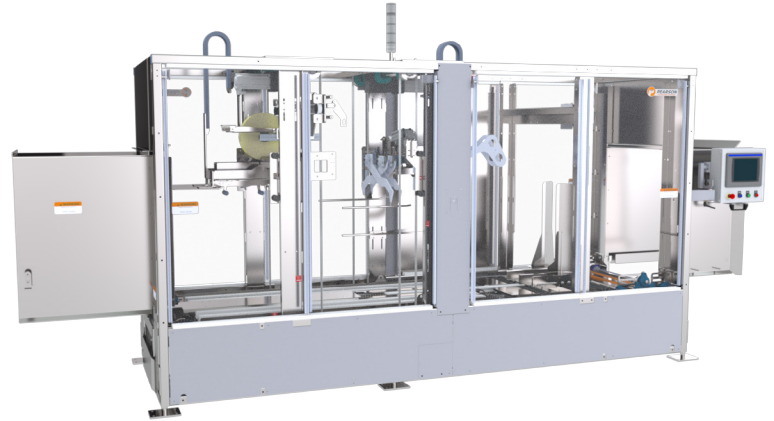



## CS30RT Random Case Sealer

Pearson's CS30-RT Random Case Sealer offers top and bottom sealing capabilities at high speeds of up to 30 cases per minute. Every case that is introduced into the machine is being measured in height and width to automatically position the folding and sealing mechanism. A convenient bypass option eliminates the need for additional conveying when pre-sealed boxes or HSCs are introduced into the line. Servo-controlled design improves versatility, increases component longevity and reduces expensive air consumption by replacing air cylinders.



<b>Speed</b>	Up to 30 cases/min	
<b>Min. Case Size Base Machine</b>	8" (L) x 8" (W) x 3" (H)	Extended case size range available
<b>Max. Case Size Base Machine</b>	26" (L) x 26" (W) x 26" (H)	
<b>Sealing</b>	Tape	
<b>Operation</b>	Servo	
<b>Changeover</b>	Each box is measured as it enters the infeed to enable automatic adjustments eliminating need for changeover	
<b>Construction</b>	Mild Steel   Stainless Steel   Low Pressure Washdown	
<b>Machine Size Range (ft)</b>	16-19 (L) x 6 (W) x 4-8 (H)	
<b>Controls</b>	Allen-Bradley CompactLogix PLC PackML Compliant PanelView Color HMI	
<b>Air Requirements</b>	80 PSI	
<b>Power Requirements</b>	460 VAC	
<b>Disconnect Sizes</b>	60 Amps	
<b>Air Consumption</b>	0.560 SCF/Cycle	
<b>Full Load Amp Base Machine</b>	40 Amps	
<b>Case Support</b>	 RSC      CSSC	

### Standard Features

- HMI with User Centric Design
- Safety Redundancy with CAT 3
- Reliable Non-Contact Interlocks
- High-Visibility Machine Status
- Easily Accessible Grace Port
- Auxillary Operator Station
- Remote Access Support Capability

### Popular Upgrade Options

- Bottom Tape
- Addtl. Tape Head
- Air-Conditioner
- Low-Temp Environment
- Plant Level Ethernet Connection

## Resources

To view videos or download floorplans of the base machine, please click on the links



CS30-RT Random Sealer  
Floor Plan



Standard  
Component  
List



Ewon Remote  
Access Router  
Information

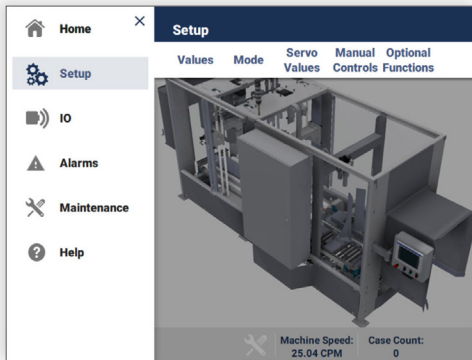


## User Centric Design

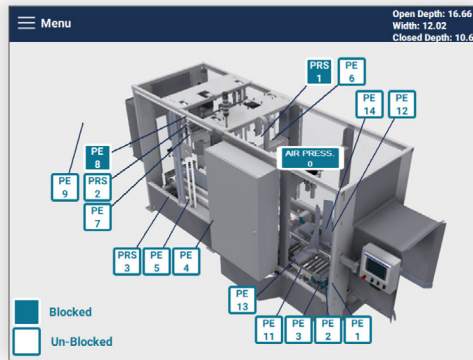
**Minimize training time | Increase changeover and fault-recovery speed | Promote improved machine maintenance**

Machine operators that perform their tasks independently free up maintenance time and keep lines running smoother. Yet frequent turnover, language barriers, and skill gaps in these positions pose significant challenges to operations teams asked to meet production goals while reducing costs in the process. Pearson's User Centric Design is there to help.

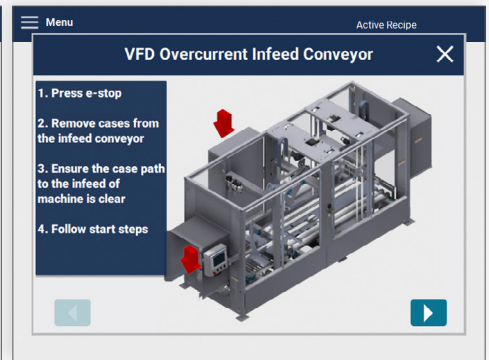
With an uncluttered design, intuitive navigation, interactive guides, live sensor maps and advanced maintenance features, the HMI has morphed into a personal assistant.



Main Navigation



Sensor Map Screen



Alarm Recovery Instructions



**Not just a  
great product  
but a reliable  
partner**

- Find reliable, thought-out solutions based on 60 years of experience | 30 years of robotic integration
- Expect a rugged machine design optimized for high-volume 24/7 operations
- Optimally support a high-turnover labor force with an intuitive Human Machine Interface (HMI)
- Benefit from a uniform user interface for your erecting, packing, sealing, and palletizing equipment
- Experience premier industry lead-times for faster delivery and shorter down-payment cycles
- Depend on our project managers to provide ongoing visibility to meet delivery timelines and budgets
- Count on comprehensive sales, aftermarket, and service support
- Rely on extensively trained and FANUC Certified technicians to service your equipment
- Always lean on us for 24/7 live service support