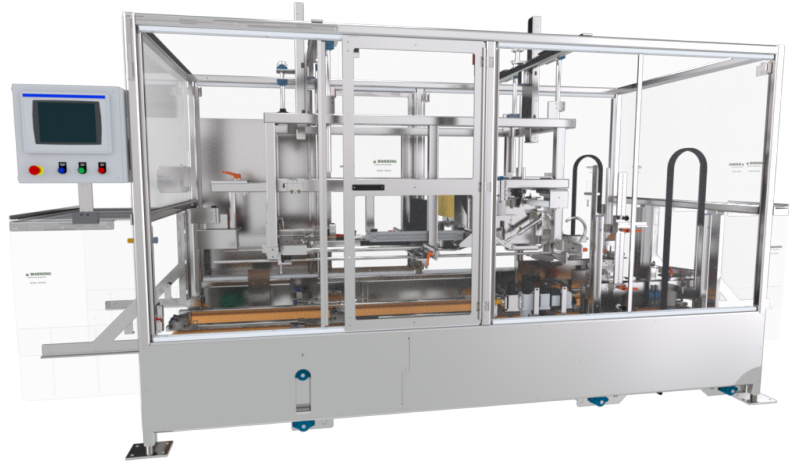
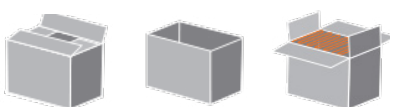


## UC15 Uncuffer

Pearson Packaging Systems' UC15 Bag Uncuffer is a versatile machine designed to uncuff and fold poly bag liners in corrugated cases at rates of up to 15 cases per minute. Uncuffing fingers reliably pull the cuff off the case by grasping all four corners of the bag simultaneously. Case and flaps are fully controlled to ensure that the case and flaps are in the correct position for bag folding. The top is then folded sequentially ensuring even bag distribution.



<b>Speed</b>	up to 15 cases/min	
<b>Min. Case Size Base Machine</b>	9.5" (L) x 6.5" (W) x 4.75" (H)	Extended case size range available
<b>Max. Case Size Base Machine</b>	24" (L) x 17" (W) x 19.25" (H)	
<b>Operation</b>	Pneumatic	
<b>Sealing</b>	Fan Fold	
<b>Changeover</b>	Manual, supported by HMI graphical guided instructions and changeover map, scales, pointers, and quick release handles, 10 min (estimate for trained technician)	
<b>Construction</b>	Mild Steel   Stainless Steel   Low Pressure Washdown	
<b>Machine Size Range (ft)</b>	8.2 (L) x 6.2 (W) x 6.2 (H)	
<b>Controls</b>	Allen-Bradley CompactLogix PLC PackML Compliant PanelView Color HMI	
<b>Air Requirements</b>	80 PSI	
<b>Power Requirements</b>	460 VAC	
<b>Disconnect Sizes</b>	30 Amps	
<b>Air Consumption</b>	1.054 SCF/Cycle	
<b>Full Load Amp Base Machine</b>	2 Amps	
<b>Case Support</b>	 RSC      HSC      Fan Fold	

### Standard Features

- HMI with User Centric Design
- Safety Redundancy with CAT 3
- Reliable Non-Contact Interlocks
- High-Visibility Machine Status
- Easily Accessible Grace Port
- Auxillary Operator Station
- Remote Access Support Capability

### Popular Upgrade Options

- Oversized and Undersized Case Support
- Air Conditioner
- Low Temperature Environment
- Portability
- Plant Level Ethernet Connection

## Resources

To view videos or download floorplans of the base machine, please click on the links



UC15 Uncuffer - Fan Fold Floor Plan



Standard Component List



Ewon Remote Access Router Information

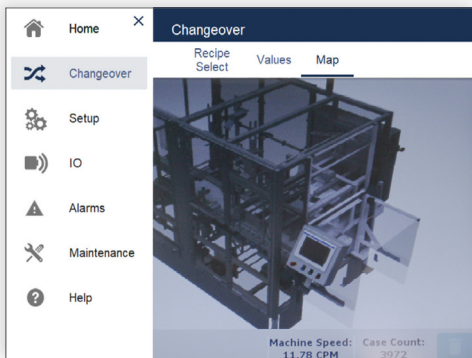


## User Centric Design

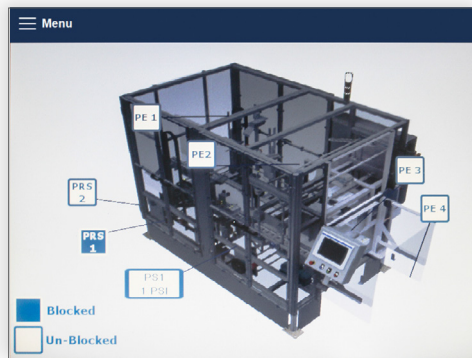
**Minimize training time | Increase changeover and fault-recovery speed | Promote improved machine maintenance**

Machine operators that perform their tasks independently free up maintenance time and keep lines running smoother. Yet frequent turnover, language barriers, and skill gaps in these positions pose significant challenges to operations teams asked to meet production goals while reducing costs in the process. Pearson's User Centric Design is there to help.

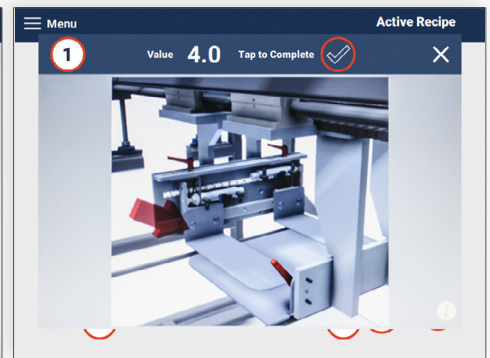
With an uncluttered design, intuitive navigation, interactive guides, live sensor maps and advanced maintenance features, the HMI has morphed into a personal assistant.



Main Navigation



Sensor Map Screen



Changeover Instructions



**Not just a  
great product  
but a reliable  
partner**

- Find reliable, thought-out solutions based on 60 years of experience | 30 years of robotic integration
- Expect a rugged machine design optimized for high-volume 24/7 operations
- Optimally support a high-turnover labor force with an intuitive Human Machine Interface (HMI)
- Benefit from a uniform user interface for your erecting, packing, sealing, and palletizing equipment
- Experience premier industry lead-times for faster delivery and shorter down-payment cycles
- Depend on our project managers to provide ongoing visibility to meet delivery timelines and budgets
- Count on comprehensive sales, aftermarket, and service support
- Rely on extensively trained and FANUC Certified technicians to service your equipment
- Always lean on us for 24/7 live service support