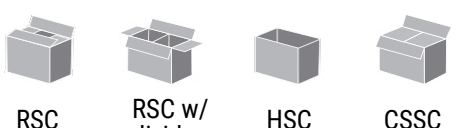


CE25 Case Erector

With a vertical case presentation and compact footprint, the Pearson CE25 Case Erector is ideal for small spaces. To ensure reliable opening of the corrugated blanks dual opposed vacuum forces grasp the case from both sides, while synchronized dual flight lugs protect case squareness as it travels through the closing and sealing mechanism.



Speed	Up to 25 cases/min	
Min. Case Size Base Machine	8" (L) x 5.5" (W) x 3" (H)	Extended case size range available
Max. Case Size Base Machine	24" (L) x 16" (W) x 18.5" (H)	
Sealing	Hot Melt Glue Tape	
Operation	VFD and pneumatic minor and major flap closure	
Changeover	Manual with HMI graphical guided instructions, changeover map, scales, pointers, and quick release handles 8 min (estimate for trained technician)	
Construction	Mild Steel Stainless Steel Low Pressure Washdown	
Machine Size Range (ft)	12-13 (L) x 5 (W) x 6-7 (H)	
Controls	Allen-Bradley CompactLogix PLC PackML Compliant PanelView Color HMI	
Air Requirements	80 PSI	
Power Requirements	460 VAC	
Disconnect Sizes	30 Amps	
Air Consumption	Glue: 1.038 SCF/Cycle Tape: 0.691 SCF/Cycle	
Full Load Amp Base Machine	Glue: 25 Amps Tape: 5 Amps	
Case Support	 RSC RSC w/divider HSC CSSC	

Standard Features

- HMI with User Centric Design
- Safety Redundancy with CAT 3
- Reliable Non-Contact Interlocks
- High-Visibility Machine Status
- Easily Accessible Grace Port
- Auxillary Operator Station
- Remote Access Support Capability

Popular Upgrade Options

- Oversized or Undersized Case Support
- Extended Magazine
- Glue on Demand System
- High-Capacity Adhesive Feeder
- Addtl. Tape Head
- Air-Conditioner
- Low-Temp Environment
- Hand-Pack Station
- Plant Level Ethernet Connection
- Portability

Resources

To view videos or download floorplans of the base machine, please click on the links

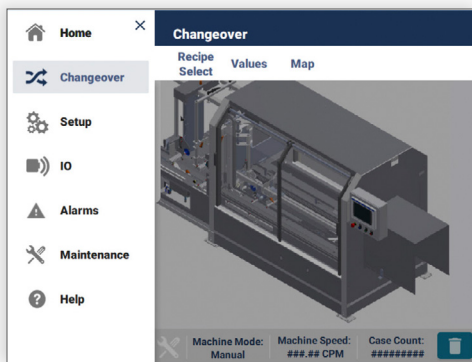
 CE25 Glue	 CE25 Tape	CE25 Glue Left-Hand PDF DWG	CE25 Glue Right-Hand PDF DWG	Standard Component List 	Ewon Remote Access Router Information 
		CE25 Tape Left-Hand PDF DWG	CE25 Tape Right-Hand PDF DWG		

User Centric Design

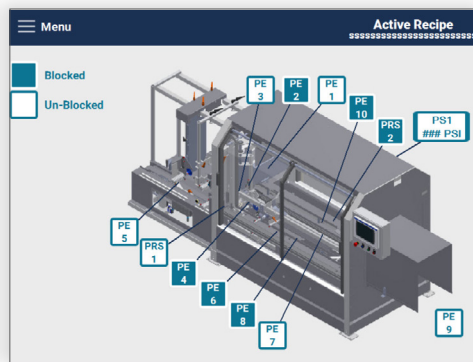
Minimize training time | Increase changeover and fault-recovery speed | Promote improved machine maintenance

Machine operators that perform their tasks independently free up maintenance time and keep lines running smoother. Yet frequent turnover, language barriers, and skill gaps in these positions pose significant challenges to operations teams asked to meet production goals while reducing costs in the process. Pearson's User Centric Design is there to help.

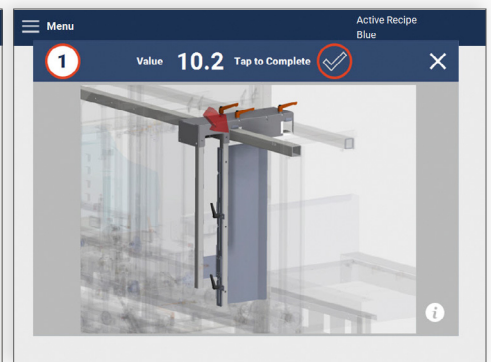
With an uncluttered design, intuitive navigation, interactive guides, live sensor maps and advanced maintenance features, the HMI has morphed into a personal assistant.



Main Navigation



Sensor Map Screen



Changeover Instructions



**Not just a
great product
but a reliable
partner**

- Find reliable, thought-out solutions based on 60 years of experience | 30 years of robotic integration
- Expect a rugged machine design optimized for high-volume 24/7 operations
- Optimally support a high-turnover labor force with an intuitive Human Machine Interface (HMI)
- Benefit from a uniform user interface for your erecting, packing, sealing, and palletizing equipment
- Experience premier industry lead-times for faster delivery and shorter down-payment cycles
- Depend on our project managers to provide ongoing visibility to meet delivery timelines and budgets
- Count on comprehensive sales, aftermarket, and service support
- Rely on extensively trained and FANUC Certified technicians to service your equipment
- Always lean on us for 24/7 live service support